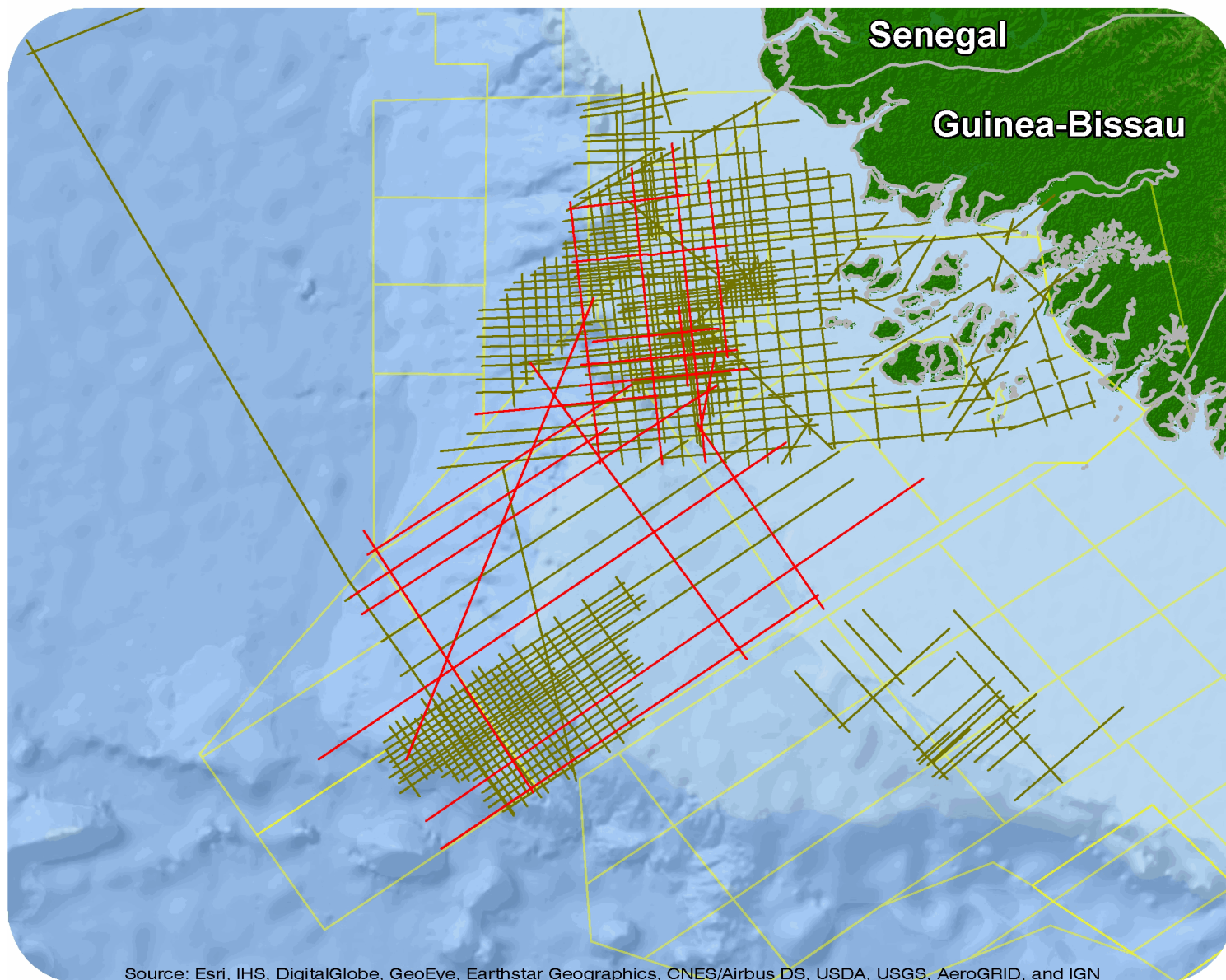




Guinea Bissau

Guinea Bissau Reprocessing 2012



Source: Esri, IHS, DigitalGlobe, GeoEye, Earthstar Geographics, CNES/Airbus DS, USDA, USGS, AeroGRID, and IGN

Guinea Bissau Repro 2012

Survey Summary

Type: 2D
 Size: 3,043.20 km
 Vessel: Various
 Acquisition Year: December 2001

Acquisition Parameters

Source Volume: Various
 Source Depth: Various
 Shot Interval: Various
 Record Length: Various
 Streamer Length: Various
 Streamer Depth: Various
 Group Interval: Various

Deliverables

Migration

Kirchhoff PSTM Stack F&S
Kirchhoff PSTM Stack Filt

Kirchhoff PSTM Stack Raw

Angle Stacks

KPSTM Super Far Ang Stack
KPSTM Near Ang Stack

KPSTM Far Ang Stack
KPSTM Mid Ang Stack

Velocity

Stacking Velocities ASCII

Gathers

PSTM Time Gaths

For more information please contact Spectrum's Multi-Client teams:

United States

Spectrum Geo Inc.
 t: +1 281 647 0602
 f: +1 281 589 6111
 e: mc-us@spectrumgeo.com

United Kingdom

Spectrum Geo Ltd.
 t: +44 1483 730201
 f: +44 1483 762620
 e: mc-uk@spectrumgeo.com

Singapore

Spectrum Geo Pte Ltd.
 t: +65 6827 9773
 f: +65 6295 2567
 e: mc-asia@spectrumgeo.com

Australia

Spectrum Geo Pty Ltd.
 t: +61 8 9322 3700
 f: +61 8 9322 1844
 e: mc-au@spectrumgeo.com