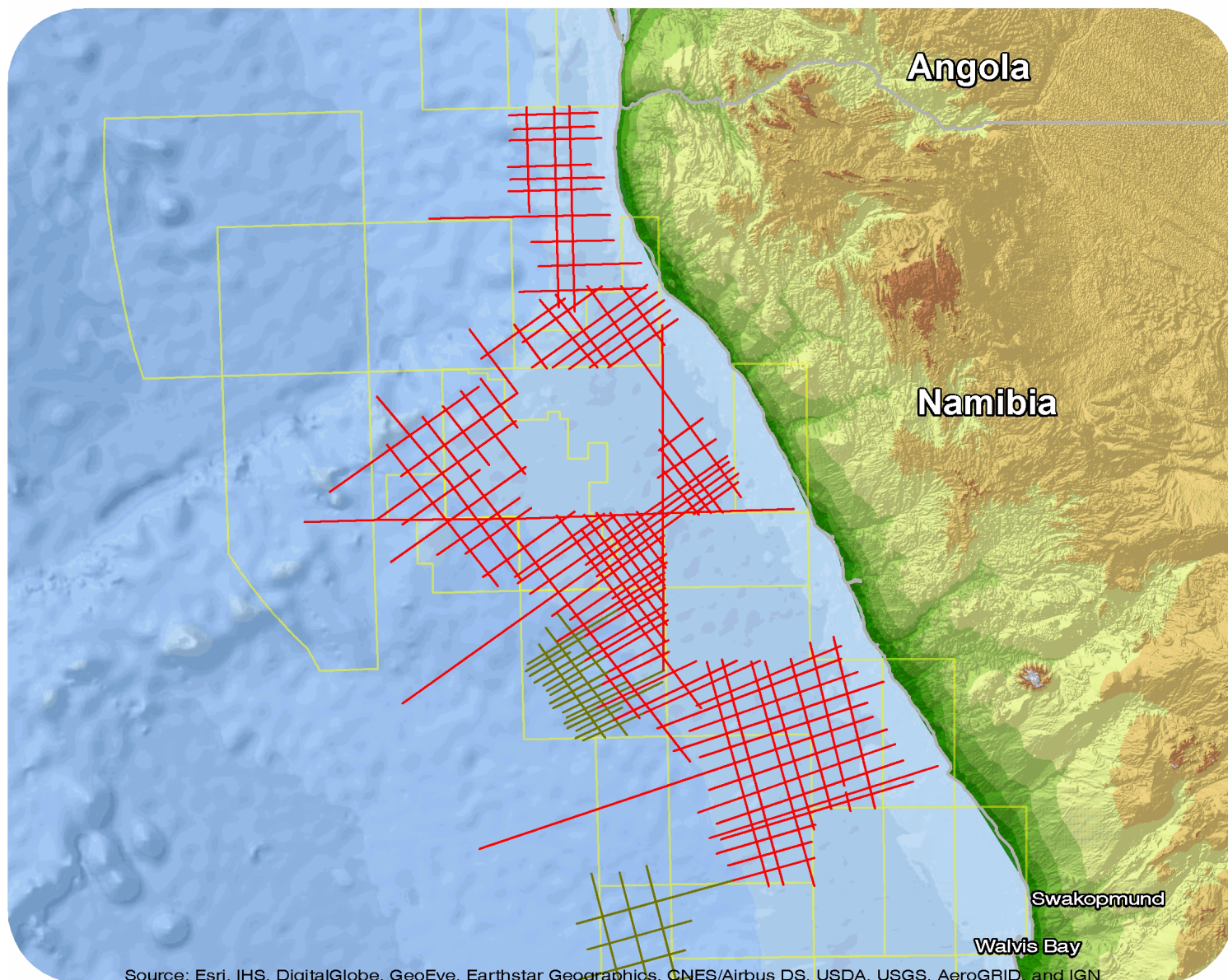




Namibia

N2R 93



Source: Esri, IHS, DigitalGlobe, GeoEye, Earthstar Geographics, CNES/Airbus DS, USDA, USGS, AeroGRID, and IGN

N2R93

Survey Summary

Type: 2D
Size: 10,167.38 km
Vessel: MV CGG Sirocco
Acquisition Year: April 1993

Acquisition Parameters

Source Volume: 3000 cu in
Source Depth: 7.5 m
Shot Interval: 50 m
Record Length: 14 s
Streamer Length: 3600 m
Streamer Depth: 10 m
Group Interval: Various

Deliverables

Other

DMO Stacks/Post stack Mig F

For more information please contact Spectrum's Multi-Client teams:

United States

Spectrum Geo Inc.
t: +1 281 647 0602
f: +1 281 589 6111
e: mc-us@spectrumgeo.com

United Kingdom

Spectrum Geo Ltd.
t: +44 1483 730201
f: +44 1483 762620
e: mc-uk@spectrumgeo.com

Singapore

Spectrum Geo Pte Ltd.
t: +65 6827 9773
f: +65 6295 2567
e: mc-asia@spectrumgeo.com

Australia

Spectrum Geo Pty Ltd.
t: +61 8 9322 3700
f: +61 8 9322 1844
e: mc-au@spectrumgeo.com