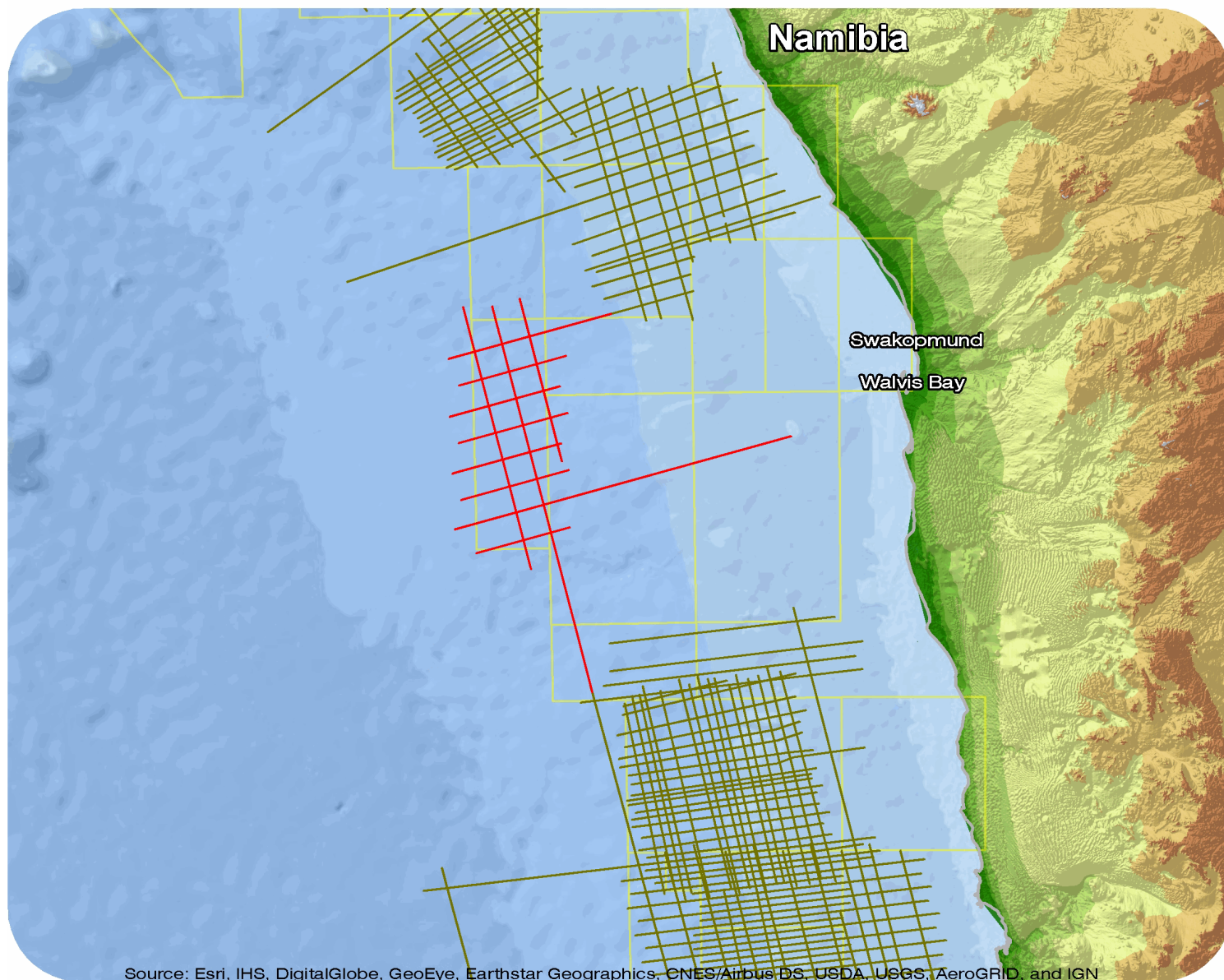




Namibia

SCSW 12



Source: Esri, IHS, DigitalGlobe, GeoEye, Earthstar Geographics, CNES/Airbus DS, USDA, USGS, AeroGRID, and IGN

SCSW 12

Survey Summary

Type: 2D
 Size: 1,432.28 km
 Vessel: MV Northern Explorer
 Acquisition Year: September 2012

Acquisition Parameters

Source Volume: 5000 cu in
 Source Depth: 7 m
 Shot Interval: 25 m
 Record Length: 10 s
 Streamer Length: 10050 m
 Streamer Depth: 10 m
 Group Interval: 12.5 m

Deliverables

Migration

Kirchhoff PSTM Stack Rel Amp
Kirchhoff PSTM Stack F&S

Kirchhoff PSTM Stack Filt

D2T

KPSDM Stack (Depth to Time)

Angle Stacks

KPSTM Super Far Ang Stack
KPSTM Mid Ang Stack

KPSTM Far Ang Stack
KPSTM Near Ang Stack

Velocity

3D Reg Vel Depth Model for Depth Conv (2D)
Stacking Velocities

Stacking Velocities ASCII
3D Reg Vel Depth Model for Depth Conv (2D) ASCII

Gathers

PSTM Time Gaths

PSTM Time Gaths with Inverse NMO

Other

Raw Field Data

Proc Gravity and Magnetic Data

For more information please contact Spectrum's Multi-Client teams:

United States

Spectrum Geo Inc.
 t: +1 281 647 0602
 f: +1 281 589 6111
 e: mc-us@spectrumgeo.com

United Kingdom

Spectrum Geo Ltd.
 t: +44 1483 730201
 f: +44 1483 762620
 e: mc-uk@spectrumgeo.com

Singapore

Spectrum Geo Pte Ltd.
 t: +65 6827 9773
 f: +65 6295 2567
 e: mc-asia@spectrumgeo.com

Australia

Spectrum Geo Pty Ltd.
 t: +61 8 9322 3700
 f: +61 8 9322 1844
 e: mc-au@spectrumgeo.com