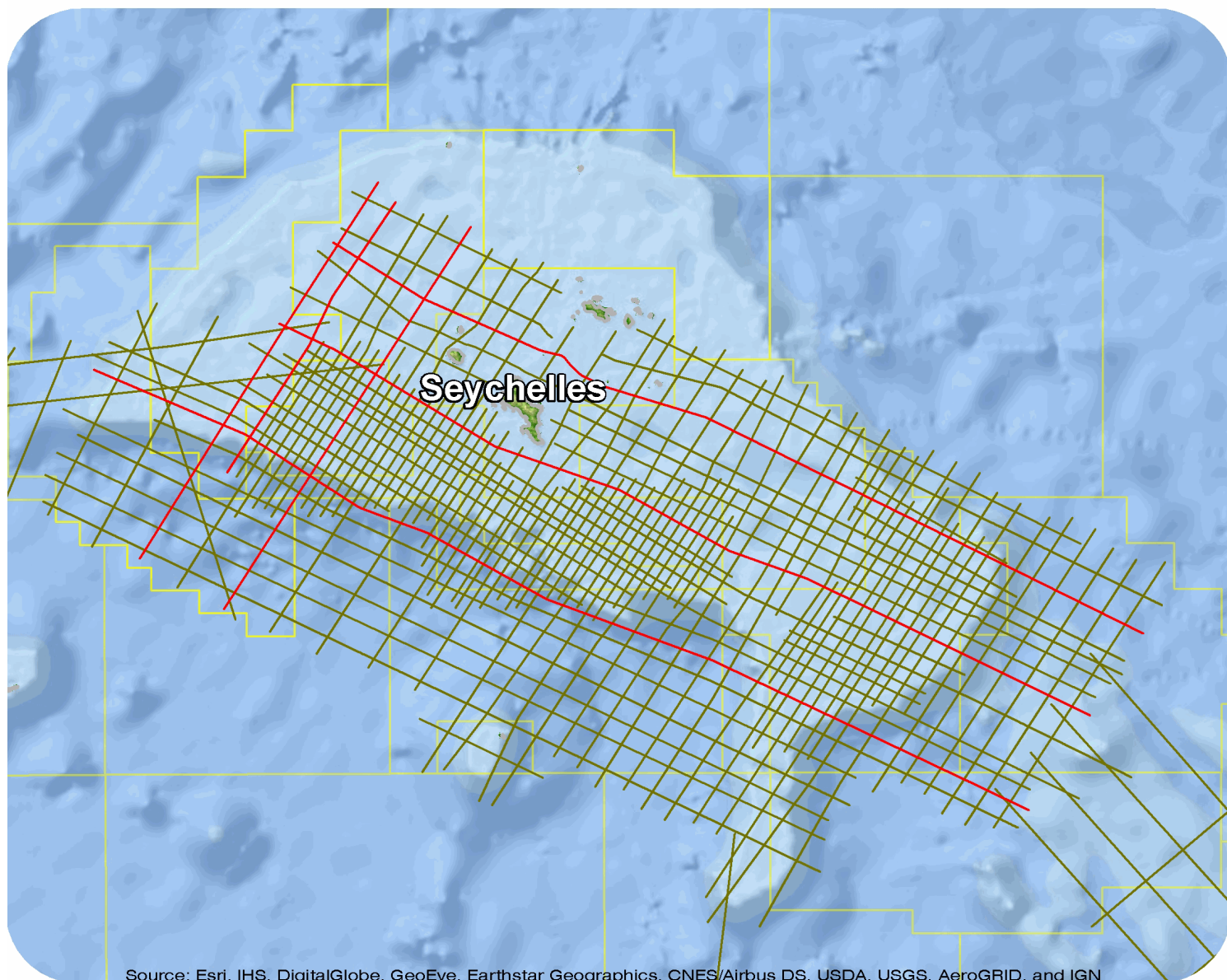




Seychelles

Seychelles Reprocessing 2015



Source: Esri, IHS, DigitalGlobe, GeoEye, Earthstar Geographics, CNES/Airbus DS, USDA, USGS, AeroGRID, and IGN

Seychelles Repro 2015

Survey Summary

Type: 2D
 Size: 1,595.64 km
 Vessel: MV Arctic Seal
 Acquisition Year: April 2011

Acquisition Parameters

Source Volume: 3620 cu in
 Source Depth: 10 m
 Shot Interval: 18.75 m
 Record Length: 7 s
 Streamer Length: 8000 m
 Streamer Depth: 11 m
 Group Interval: 12.5 m

Deliverables

Migration

<i>Raw Full Stack</i>	<i>PSDM Stacks - Depth</i>
<i>PSDM Stacks - Time</i>	<i>Processed Full Stack</i>

Angle Stacks

<i>Processed Far Angle Stack</i>	<i>Raw Near Angle Stacks</i>
<i>Raw Mid Angle Stacks</i>	<i>Raw Far Angle Stacks</i>
<i>Processed Near Angle Stack</i>	<i>Processed Mid Angle Stack</i>

Velocity

<i>Migration Velocity</i>	<i>Final Stacking Velocities</i>
<i>Final PSDM Velocity Models</i>	<i>Final PSDM Velocity Models</i>

Gathers

<i>PSDM Gathers</i>	<i>PSTM Gathers</i>
<i>Final PSTM Gathers</i>	<i>Demultiple Gathers</i>

For more information please contact Spectrum's Multi-Client teams:

United States

Spectrum Geo Inc.
 t: +1 281 647 0602
 f: +1 281 589 6111
 e: mc-us@spectrumgeo.com

United Kingdom

Spectrum Geo Ltd.
 t: +44 1483 730201
 f: +44 1483 762620
 e: mc-uk@spectrumgeo.com

Singapore

Spectrum Geo Pte Ltd.
 t: +65 6827 9773
 f: +65 6295 2567
 e: mc-asia@spectrumgeo.com

Australia

Spectrum Geo Pty Ltd.
 t: +61 8 9322 3700
 f: +61 8 9322 1844
 e: mc-au@spectrumgeo.com