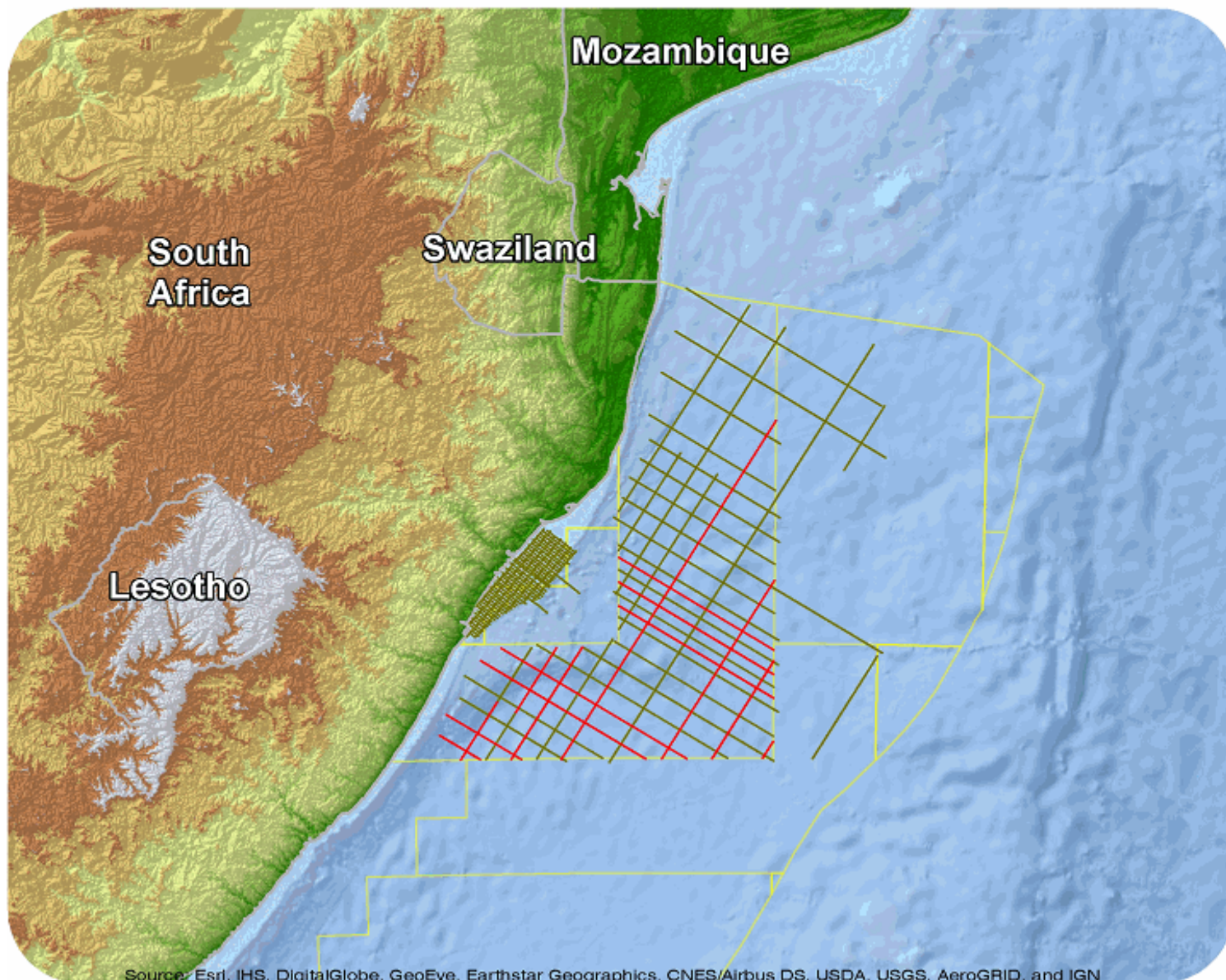




# South Africa

CDZ 14



Source: Esri, IHS, DigitalGlobe, GeoEye, Earthstar Geographics, CNES/Airbus DS, USDA, USGS, AeroGRID, and IGN

## CDZ14

## Survey Summary

Type: 2D  
 Size: 2,003.63 km  
 Vessel: MV Princess  
 Acquisition Year: April 2014

## Acquisition Parameters

Source Volume: 5580 cu in  
 Source Depth: 6 m  
 Shot Interval: 37.5 m  
 Record Length: 12.05 s  
 Streamer Length: 10050 m  
 Streamer Depth: 7 m  
 Group Interval: 12.5 m

## Deliverables

## Migration

*Kirchhoff PSTM Stack F&S*

## Angle Stacks

*KPSTM Far Ang Stack*

*KPSTM Near Ang Stack*

*KPSTM Mid Ang Stack*

## Velocity

*RMS Mig Velocities*

*Stacking Velocities*

*Stacking Velocities*

For more information please contact Spectrum's Multi-Client teams:

**United States**

Spectrum Geo Inc.  
 t: +1 281 647 0602  
 f: +1 281 589 6111  
 e: mc-us@spectrumgeo.com

**United Kingdom**

Spectrum Geo Ltd.  
 t: +44 1483 730201  
 f: +44 1483 762620  
 e: mc-uk@spectrumgeo.com

**Singapore**

Spectrum Geo Pte Ltd.  
 t: +65 6827 9773  
 f: +65 6295 2567  
 e: mc-asia@spectrumgeo.com

**Australia**

Spectrum Geo Pty Ltd.  
 t: +61 8 9322 3700  
 f: +61 8 9322 1844  
 e: mc-au@spectrumgeo.com