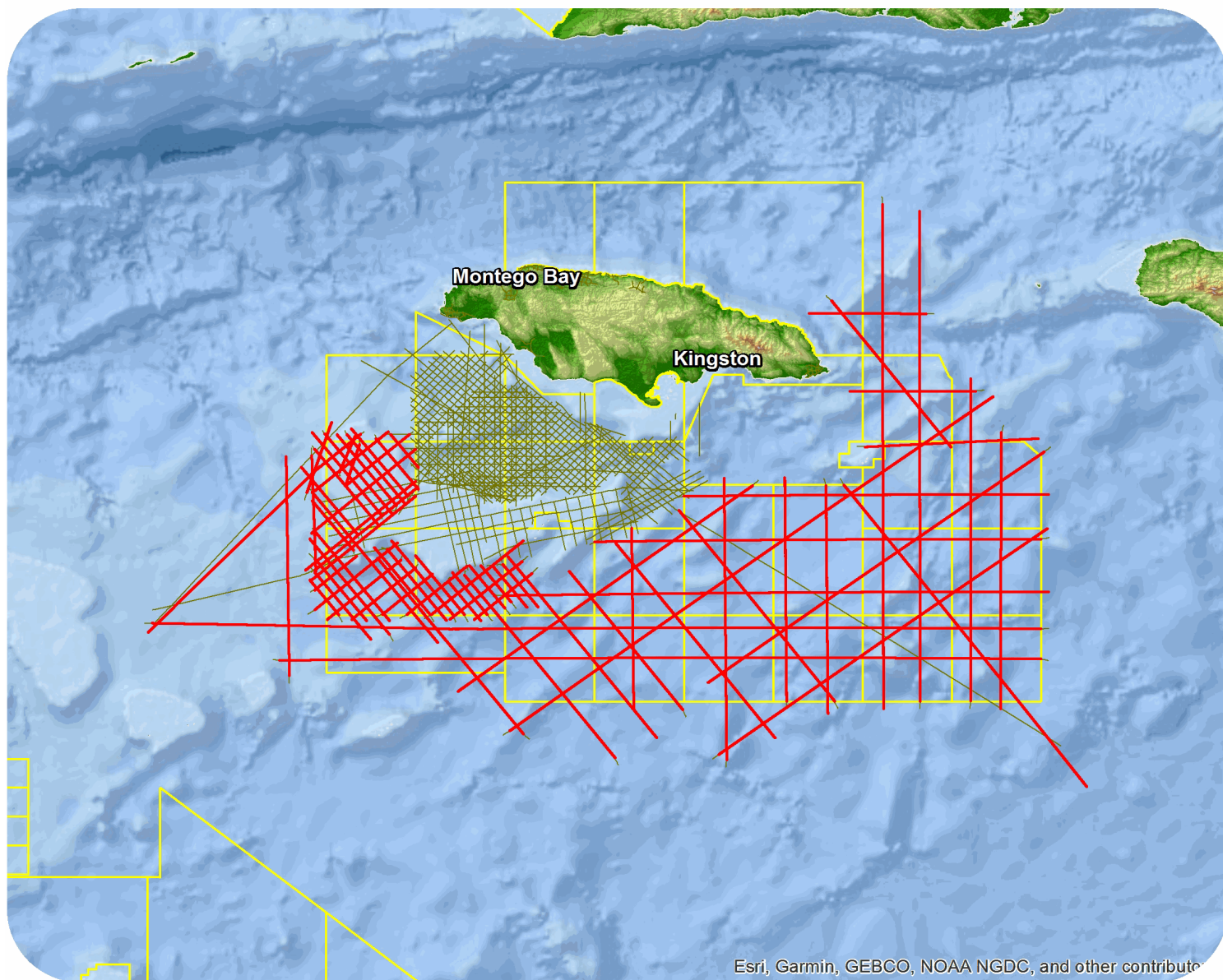




Caribbean

Jamaica 2015



Esri, Garmin, GEBCO, NOAA NGDC, and other contributors

Jamaica 2015

Survey Summary

Type: 2D
 Size: 8,730.40 km
 Vessel: MV Discoverer
 Acquisition Year: December 2009

Acquisition Parameters

Source Volume: 3980 cu in
 Source Depth: 7 m
 Shot Interval: 25 m
 Record Length: 10 s
 Streamer Length: 9450 m
 Streamer Depth: 9 m
 Group Interval: 12.5 m

Deliverables

Migration

Kirchhoff PSTM Stack (Re-depthed) F&S

Kirchhoff PSDM Stack F&S

Kirchoff PSTM Stack Scaled

Kirchhoff PSTM Stack F&S

Kirchhoff PSDM Stack

Kirchhoff PSDM Re-Depth Stack F&S

D2T

KPSDM Stack (Depth to Time) F&S

Angle Stacks

KPSTM Near Ang Stack

KPSTM Far Ang Stack

KPSTM Mid Ang Stack

Velocity

PSDM Depth-Int Vel Model

RMS Mig Velocities

3D Reg Vel Depth Model for Depth Conv (2D)

Stacking Velocities

Gathers

PSTM Time Gaths

Original acquisition: Jamaica Ph 1

Gravity and Magnetic Report

Processed Gravity

Magnetics

Raw Field Data

Original acquisition: Jamaica Ph 2

Gravity and Magnetic Report

Processed Gravity

Magnetics

Raw Field Data

For more information please contact Spectrum's Multi-Client teams:

United States

Spectrum Geo Inc.
 t: +1 281 647 0602
 f: +1 281 589 6111
 e: mc-us@spectrumgeo.com

United Kingdom

Spectrum Geo Ltd.
 t: +44 1483 730201
 f: +44 1483 762620
 e: mc-uk@spectrumgeo.com

Singapore

Spectrum Geo Pte Ltd.
 t: +65 6827 9773
 f: +65 6295 2567
 e: mc-asia@spectrumgeo.com

Australia

Spectrum Geo Pty Ltd.
 t: +61 8 9322 3700
 f: +61 8 9322 1844
 e: mc-au@spectrumgeo.com