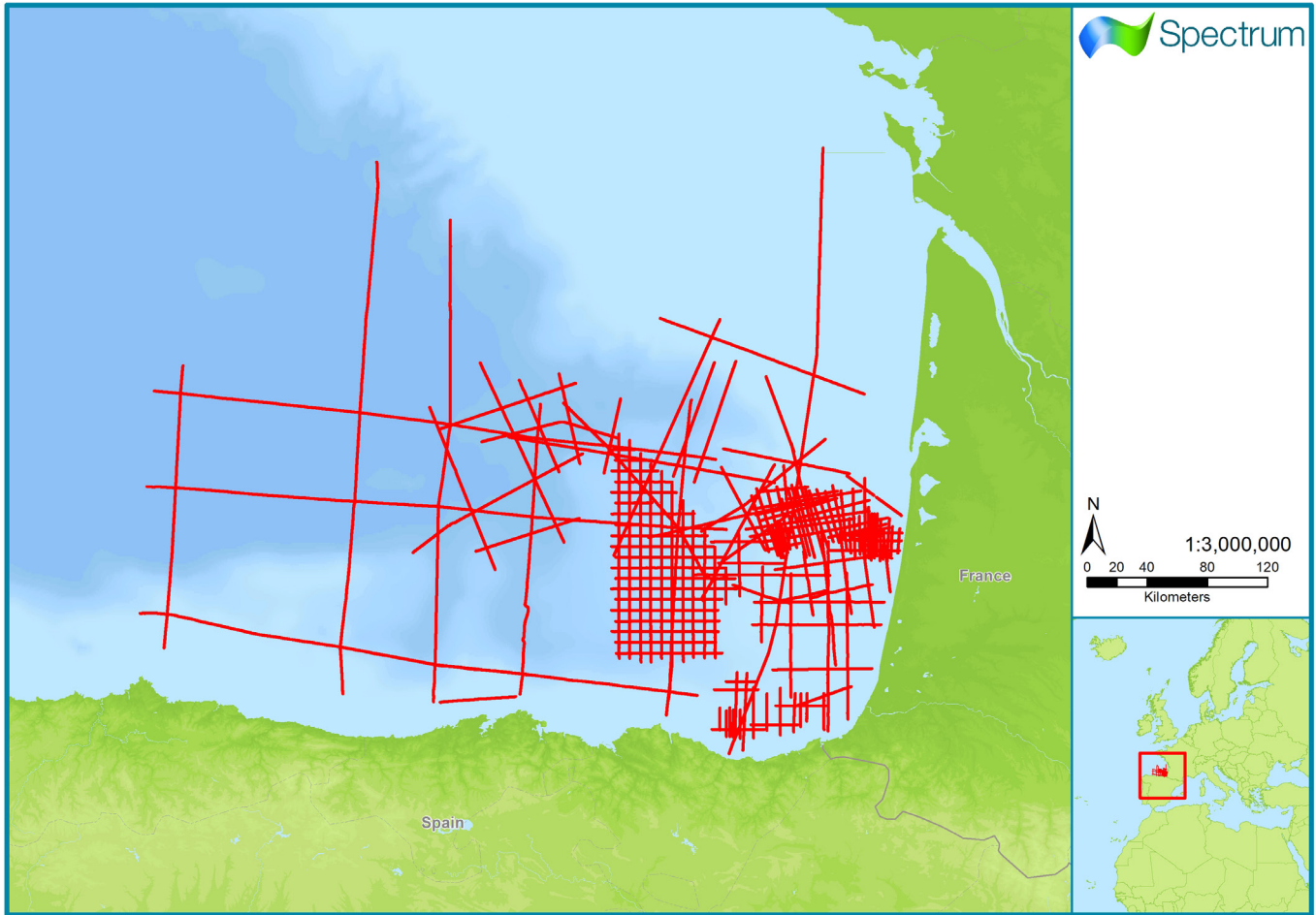


West Mediterranean

Bay of Biscay



Spectrum Multi-Client seismic coverage in RED

Survey Name:	Bay of Biscay
Type:	2D Seismic
Date:	Acquired - Various Reprocessed - 2015
Survey Size:	6,442 km (Phase 1) 1501.13 km (Phase 2)
Acquisition Parameters:	Full details of the acquisition parameters are available on request
Key Processing Sequence and Deliverables:	PSTM
	PSTM Gathers
	Velocities
	Navigation

For more information please contact Spectrum's Multi-Client teams:

United States

Spectrum Geo Inc.
Tel: +1 281 647 0602
Fax: +1 281 589 8111
Email: mc-us@spectrumgeo.com

United Kingdom

Spectrum Geo Ltd.
Tel: +44 1483 730201
Fax: +44 1483 762620
Email: mc-uk@spectrumgeo.com

Singapore:

Spectrum Geo Pte Ltd.
Tel: +65 6827 9773
Fax: +66 6295 2567
Email: mc-asia@spectrumgeo.com

Australia:

Spectrum Geo Pty Ltd.
Tel: +61 8 9322 3700
Fax: +61 8 9322 1844
Email: mc-au@spectrumgeo.com

MULTI-CLIENT

