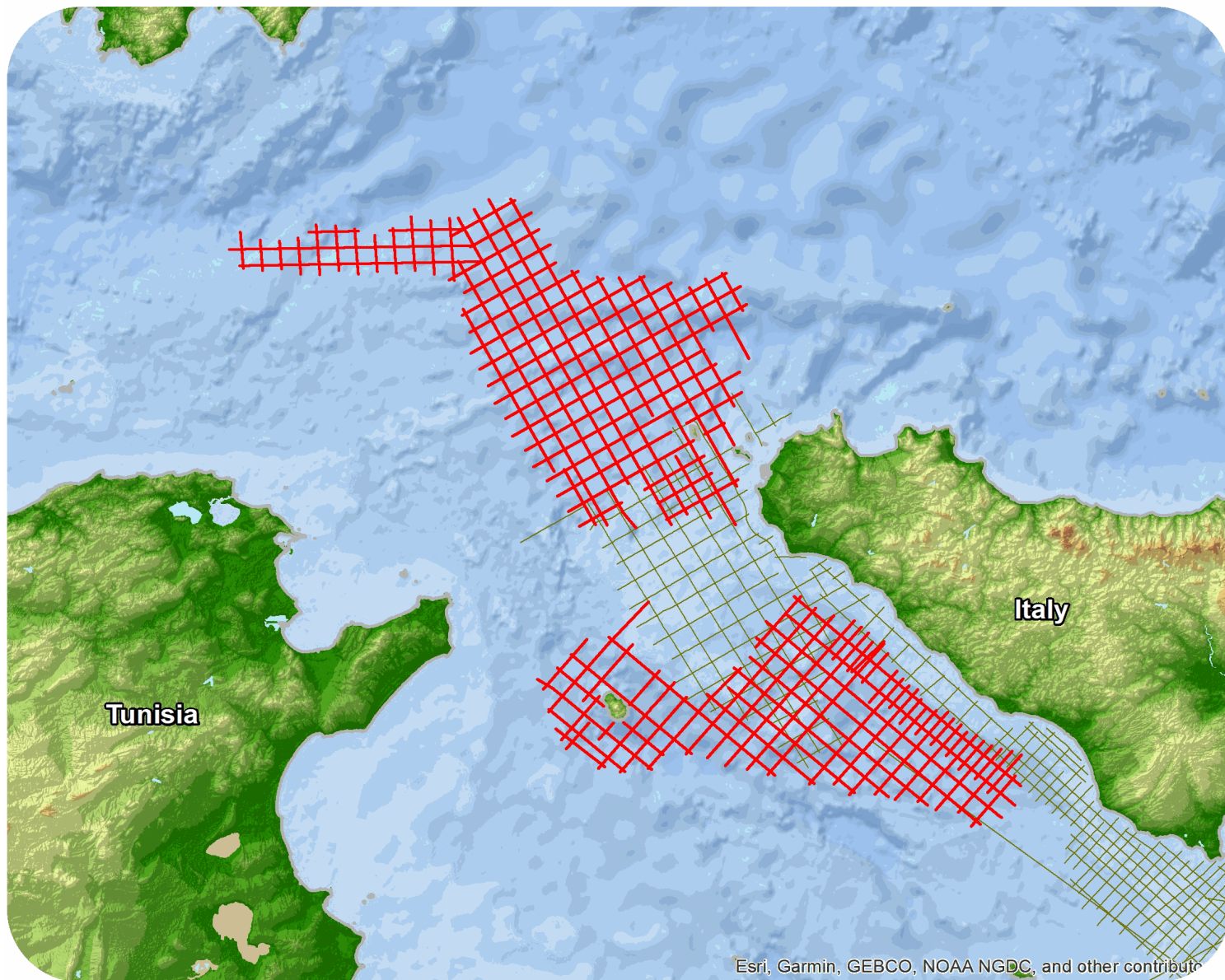




Mediterranean

G82 Videpi Repro 2015



Esri, Garmin, GEBCO, NOAA NGDC, and other contributors

G82 Videpi Repro 2015

Survey Summary

Type: 2D
 Size: 6,175.78 km
 Vessel: MV Arctic Seal
 Acquisition Year: January 1982

Acquisition Parameters

Source Volume: 2000 cu in
 Source Depth: 6 m
 Shot Interval: 25 m
 Record Length: 7 s
 Streamer Length: 2400 m
 Streamer Depth: 16.5 m
 Group Interval: 25 m

Deliverables

Migration

Kirchhoff PSTM Stack Filt
Kirchhoff PSTM Stack Raw

Kirchhoff PSTM Stack F&S

Angle Stacks

KPSTM Far Ang Stack
KPSTM Mid Ang Stack

KPSTM Near Ang Stack

Velocity

Stacking Velocities ASCII
RMS Mig Velocities ASCII

Stacking Velocities
RMS Mig Velocities

Original acquisition: G82 Videpi Repro

Raw Field Data

For more information please contact Spectrum's Multi-Client teams:

United States

Spectrum Geo Inc.
 t: +1 281 647 0602
 f: +1 281 589 6111
 e: mc-us@spectrumgeo.com

United Kingdom

Spectrum Geo Ltd.
 t: +44 1483 730201
 f: +44 1483 762620
 e: mc-uk@spectrumgeo.com

Singapore

Spectrum Geo Pte Ltd.
 t: +65 6827 9773
 f: +65 6295 2567
 e: mc-asia@spectrumgeo.com

Australia

Spectrum Geo Pty Ltd.
 t: +61 8 9322 3700
 f: +61 8 9322 1844
 e: mc-au@spectrumgeo.com