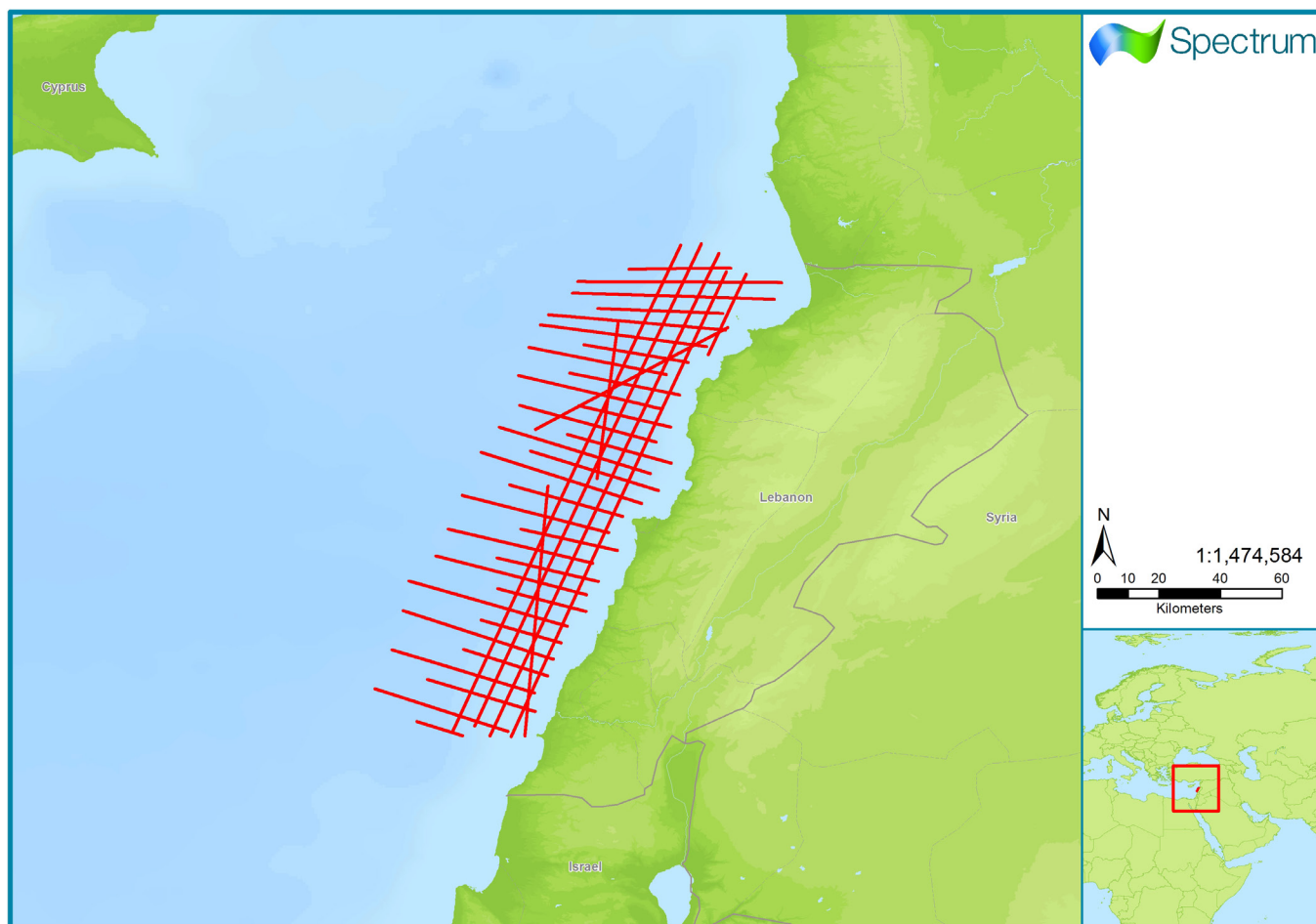


Lebanon

LEB-02



Spectrum Multi-Client seismic coverage in RED

MULTI-CLIENT



Survey Name:	LEB-02	
Type:	2D Seismic	
Date:	Acquired: 2002 Reprocessed: 2012	
Survey Size:	2,006 km	
Acquisition Parameters:	Vessel:	sr/v G.D. Nalivkin
	Source volume:	3,410 in ³ Air Gun Array
	Source depth:	6 m
	Shot Point interval:	25 m
	Record length:	9 s
	Streamer length:	6,000 m
	Streamer depth:	8 m
	Group interval:	12.5 m
Processing Sequence:	Full details of the processing sequence are available on request	
Deliverables:	PSTM	
	PSTM Gathers	
	PSTM Angle Stacks	
	Velocities	
	Navigation	

For more information please contact Spectrum's Multi-Client teams:

United States
Spectrum Geo Inc.
Tel: +1 281 647 0602
Fax: +1 281 589 8111
Email: mc-us@spectrumgeo.com

United Kingdom
Spectrum Geo Ltd.
Tel: +44 1483 730201
Fax: +44 1483 762620
Email: mc-uk@spectrumgeo.com

Singapore:
Spectrum Geo Pte Ltd.
Tel: +65 6827 9773
Fax: +66 6295 2567
Email: mc-asia@spectrumgeo.com

Australia:
Spectrum Geo Pty Ltd.
Tel: +61 8 9322 3700
Fax: +61 8 9322 1844
Email: mc-au@spectrumgeo.com

MULTI-CLIENT

