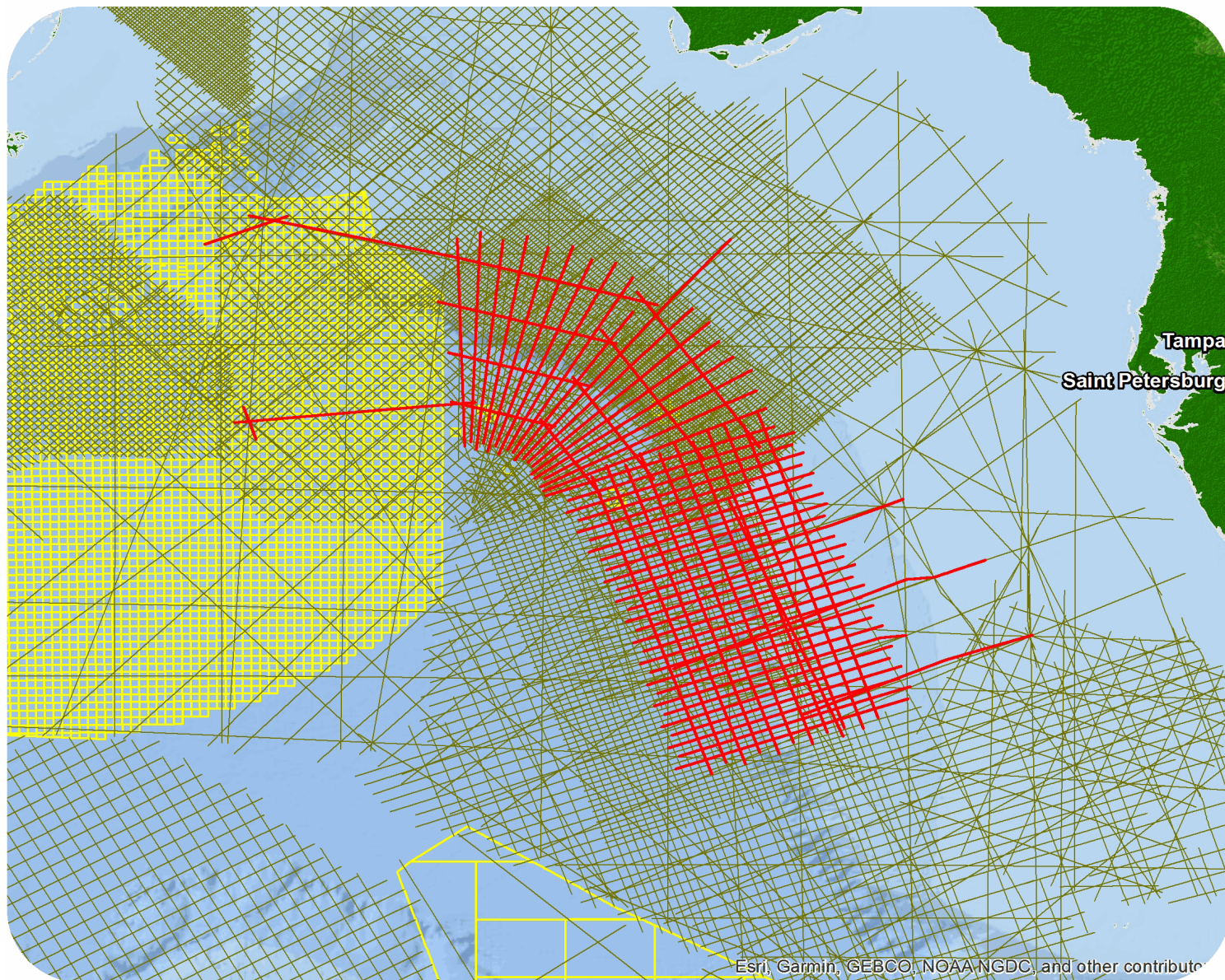




# US: Gulf of Mexico

## Big Wave GoM Phase 1



Esri, Garmin, GEBCO, NOAA-NGDC, and other contributors

## Big Wave Gulf of Mexico Phase 1

## Survey Summary

Type: 2D  
 Size: 9,966.94 km  
 Vessel: GGS Atlantic,Odin Explorer  
 Acquisition Year: October 2007

## Acquisition Parameters

Source Volume: 3100 cu in  
 Source Depth: 6 m  
 Shot Interval: 37.5 m  
 Record Length: 13 s  
 Streamer Length: 9000 m  
 Streamer Depth: 7 m  
 Group Interval: 12.5 m

## Deliverables

## Migration

*Kirchhoff PSTM Stack F&S*

*Wave Equation PSDM (Depth to Time) F&S*

## D2T

*KPSDM Stack (Depth to Time)*

## Velocity

*PSDM Depth-Int Vel Model*

*Original acquisition: Big Wave Gulf of Mexico Ph. 1*

Gravity and Magnetic Report

Proc Gravity and Magnetic Data

Raw Field Data

For more information please contact Spectrum's Multi-Client teams:

## United States

Spectrum Geo Inc.  
 t: +1 281 647 0602  
 f: +1 281 589 6111  
 e: mc-us@spectrumgeo.com

## United Kingdom

Spectrum Geo Ltd.  
 t: +44 1483 730201  
 f: +44 1483 762620  
 e: mc-uk@spectrumgeo.com

## Singapore

Spectrum Geo Pte Ltd.  
 t: +65 6827 9773  
 f: +65 6295 2567  
 e: mc-asia@spectrumgeo.com

## Australia

Spectrum Geo Pty Ltd.  
 t: +61 8 9322 3700  
 f: +61 8 9322 1844  
 e: mc-au@spectrumgeo.com