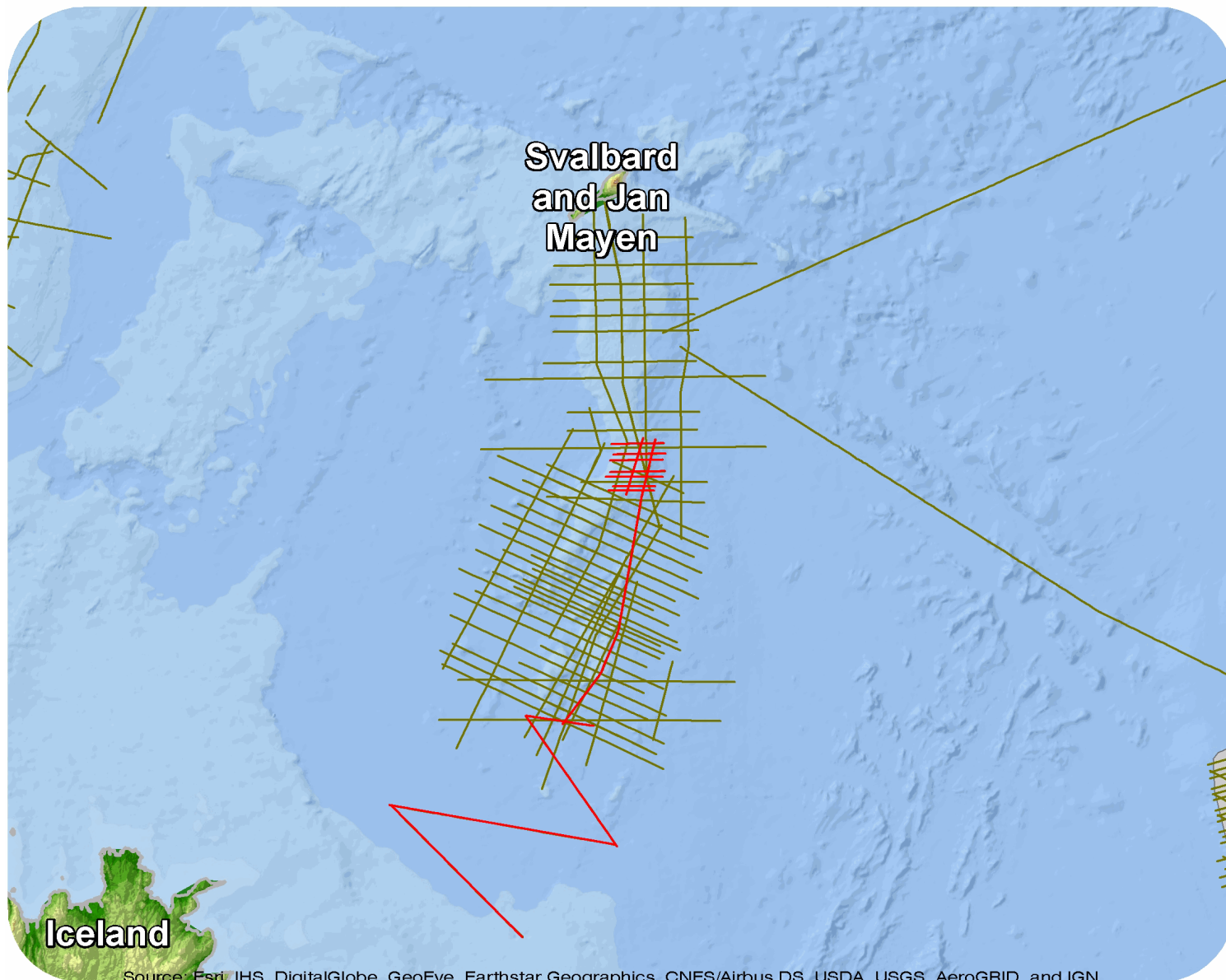




# Iceland

## JM-88 Repro 2013



Source: Esri, IHS, DigitalGlobe, GeoEye, Earthstar Geographics, CNES/Airbus DS, USDA, USGS, AeroGRID, and IGN

## JM-88 Repro 2013

## Survey Summary

Type: 2D  
 Size: 988.15 km  
 Vessel: MS Hakon Mosby  
 Acquisition Year: September 1988

## Acquisition Parameters

Source Volume: 1796 cu in  
 Source Depth: 7 m  
 Shot Interval: 50 m  
 Record Length: 10 s  
 Streamer Length: 2400 m  
 Streamer Depth: 10 m  
 Group Interval: 50 m

## Deliverables

## Migration

*Kirchhoff PSTM Stack Raw*

*Kirchhoff PSTM Stack F&S*

## Velocity

*Stacking Velocities ASCII*

*RMS Mig Velocities ASCII*

*Original acquisition: JM-88 Repro 2009*

Kirchhoff PSTM Stack F&S

Kirchhoff PSTM Stack Raw

PSTM Time Gaths

Raw Field Data

For more information please contact Spectrum's Multi-Client teams:

**United States**

Spectrum Geo Inc.  
 t: +1 281 647 0602  
 f: +1 281 589 6111  
 e: mc-us@spectrumgeo.com

**United Kingdom**

Spectrum Geo Ltd.  
 t: +44 1483 730201  
 f: +44 1483 762620  
 e: mc-uk@spectrumgeo.com

**Singapore**

Spectrum Geo Pte Ltd.  
 t: +65 6827 9773  
 f: +65 6295 2567  
 e: mc-asia@spectrumgeo.com

**Australia**

Spectrum Geo Pty Ltd.  
 t: +61 8 9322 3700  
 f: +61 8 9322 1844  
 e: mc-au@spectrumgeo.com