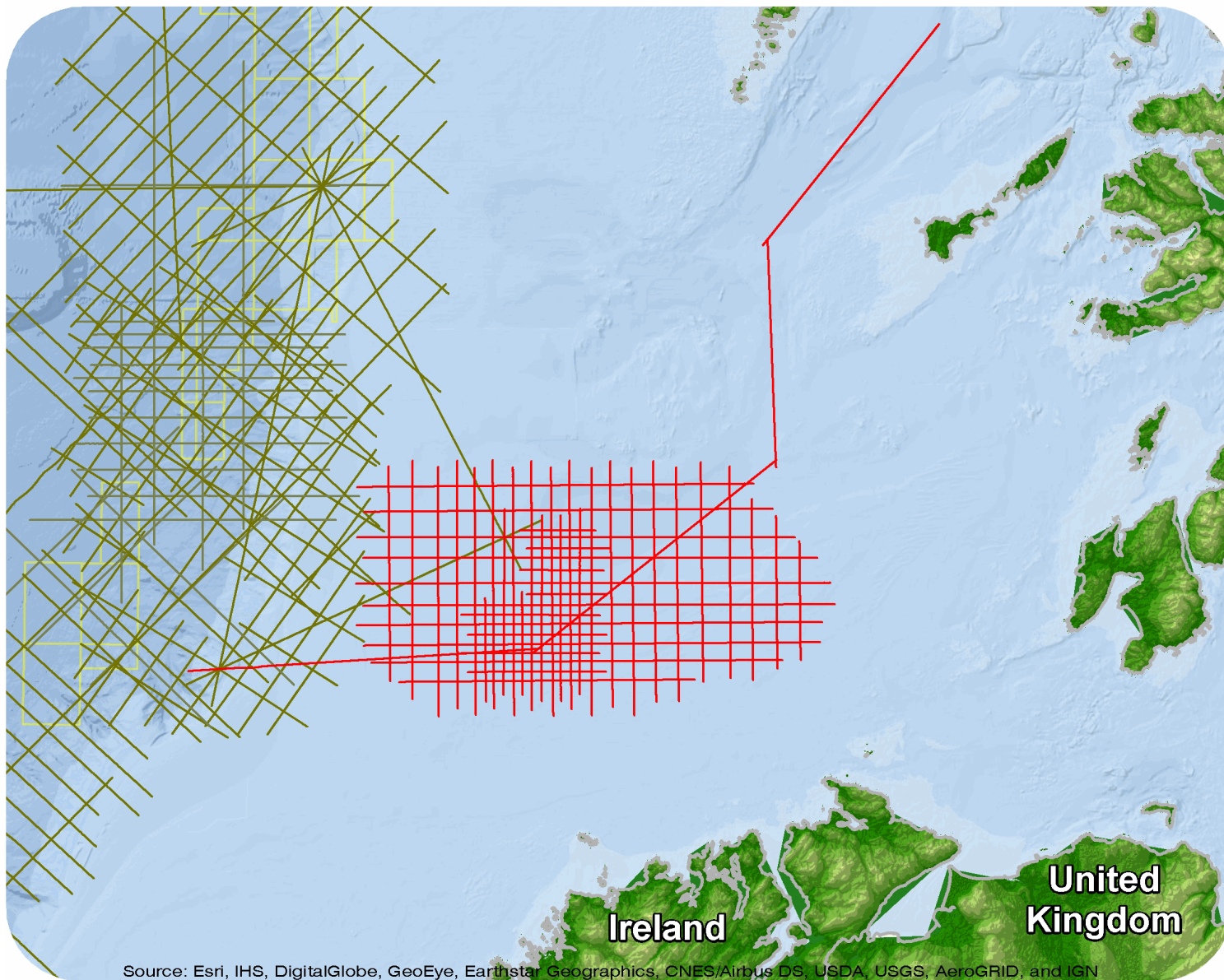




Ireland

Donegal Basin Survey 1999



Source: Esri, IHS, DigitalGlobe, GeoEye, Earthstar Geographics, CNES/Airbus DS, USDA, USGS, AeroGRID, and IGN

Donegal Basin Survey 1999 DBS99

Survey Summary

Type: 2D
 Size: 2,667.60 km
 Vessel: MV Geo Scanner
 Acquisition Year: July 1999

Acquisition Parameters

Source Volume: 880 cu in
 Source Depth: 5 m
 Shot Interval: 25 m
 Record Length: 7 s
 Streamer Length: 3000 m
 Streamer Depth: 6 m
 Group Interval: 25 m

Deliverables

Migration

*Final Migration**Raw Stack**Raw Migration*

Velocity

*Migration Velocities - ASCII**Stacking Velocities - ASCII*

Other

Field data

For more information please contact Spectrum's Multi-Client teams:

United States

Spectrum Geo Inc.
 t: +1 281 647 0602
 f: +1 281 589 6111
 e: mc-us@spectrumgeo.com

United Kingdom

Spectrum Geo Ltd.
 t: +44 1483 730201
 f: +44 1483 762620
 e: mc-uk@spectrumgeo.com

Singapore

Spectrum Geo Pte Ltd.
 t: +65 6827 9773
 f: +65 6295 2567
 e: mc-asia@spectrumgeo.com

Australia

Spectrum Geo Pty Ltd.
 t: +61 8 9322 3700
 f: +61 8 9322 1844
 e: mc-au@spectrumgeo.com