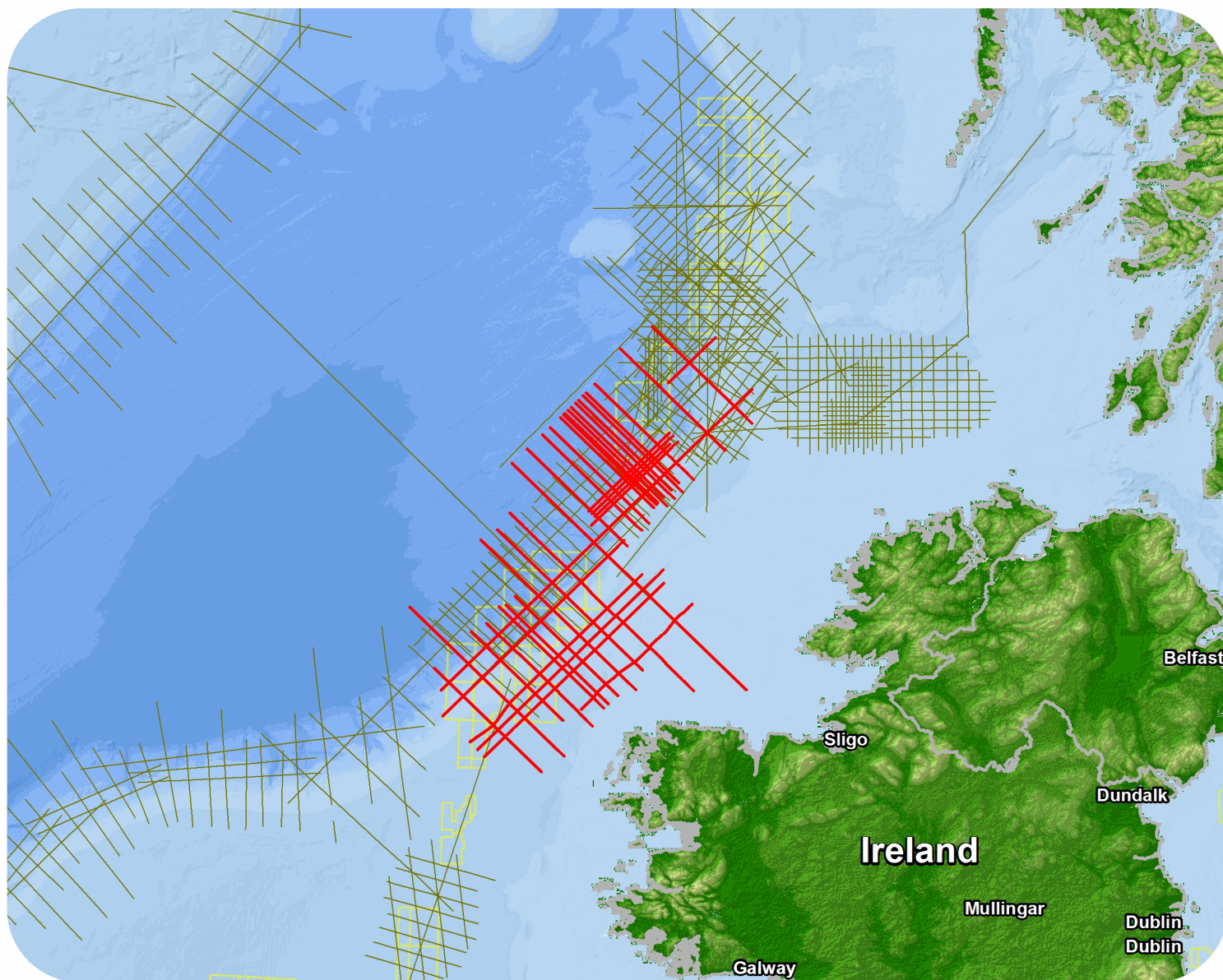


# UK and Ireland

## East Rockall Margin 2007 ERM07



## East Rockall Margin 2007 ERM07

## Survey Summary

Type: 2D  
 Size: 2,904.65 km  
 Vessel: Akademik Lazarev  
 Acquisition Year: August 2006

## Acquisition Parameters

Source Volume: 4258 cu in  
 Source Depth: 7 m  
 Shot Interval: 25 m  
 Record Length: 9 s  
 Streamer Length: 8100 m  
 Streamer Depth: 12 m  
 Group Interval: 12.5 m

## Deliverables

## Migration

*Proc Mig*

## Angle Stacks

*Far Angle Stack*

*Mid Angle Stacks*

*Near Angle Stacks*

## Velocity

*Stacking Velocities - ASCII*

*Migration Velocities - ASCII*

*Migration Velocities - ASCII*

*Stacking Velocities - ASCII*

## Gathers

*Gathers no NMO*

*Gathers with NMO*

## Other

*Field data*

*(GM) Processed Gravity Data*

For more information please contact Spectrum's Multi-Client teams:

## United States

Spectrum Geo Inc.  
 t: +1 281 647 0602  
 f: +1 281 589 6111  
 e: mc-us@spectrumgeo.com

## United Kingdom

Spectrum Geo Ltd.  
 t: +44 1483 730201  
 f: +44 1483 762620  
 e: mc-uk@spectrumgeo.com

## Singapore

Spectrum Geo Pte Ltd.  
 t: +65 6827 9773  
 f: +65 6295 2567  
 e: mc-asia@spectrumgeo.com

## Australia

Spectrum Geo Pty Ltd.  
 t: +61 8 9322 3700  
 f: +61 8 9322 1844  
 e: mc-au@spectrumgeo.com