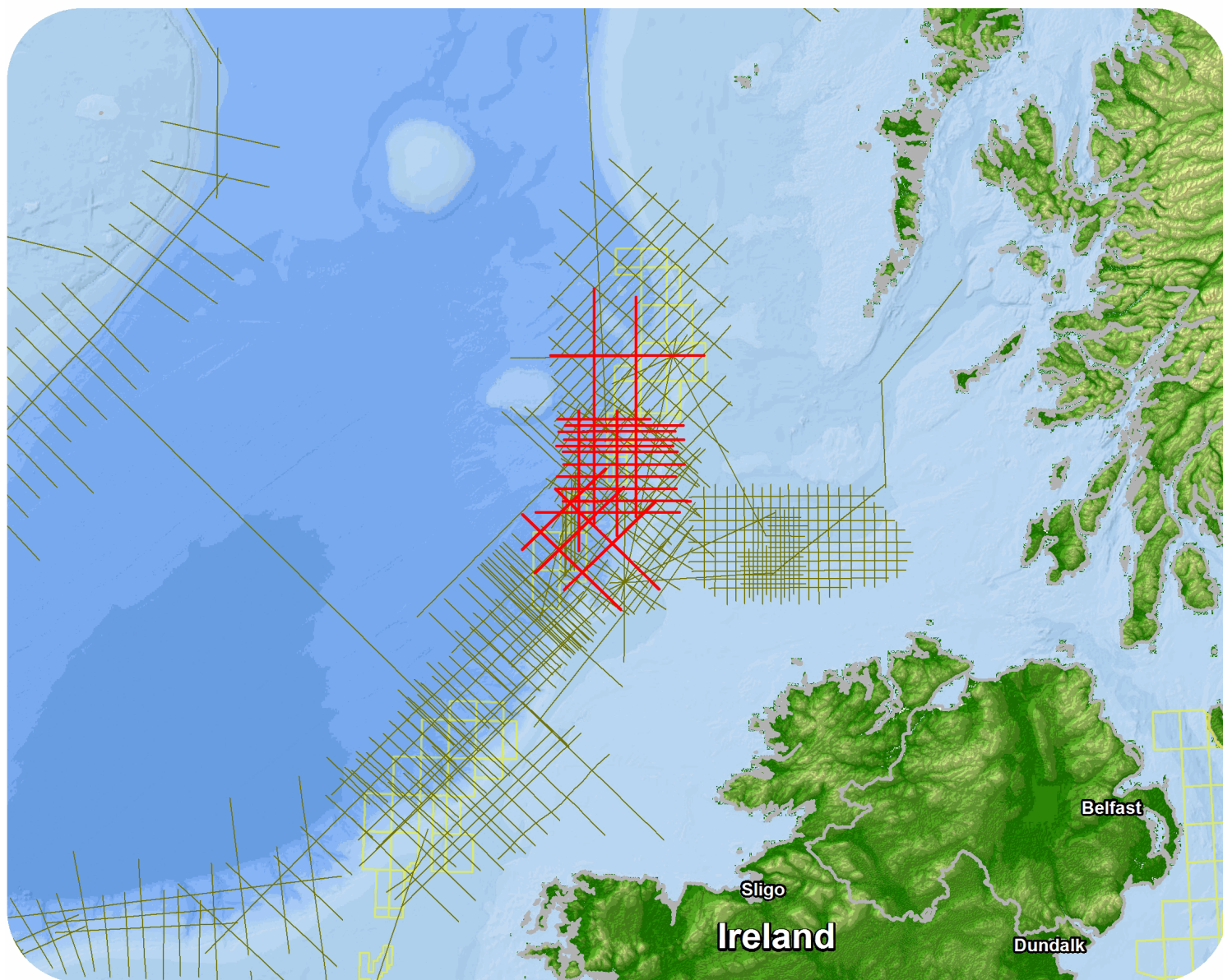




# UK and Ireland

## East Rockall Margin 2009 ERM09



## East Rockall Margin 2009 ERM09

## Survey Summary

Type: 2D  
 Size: 1,354.85 km  
 Vessel: RV Munin Explorer  
 Acquisition Year: September 2009

## Acquisition Parameters

Source Volume: 5500 cu in  
 Source Depth: 7 m  
 Shot Interval: 25 m  
 Record Length: 9 s  
 Streamer Length: 8100 m  
 Streamer Depth: 10 m  
 Group Interval: 12.5 m

## Deliverables

## Migration

*Raw Stack* *Filtered and scaled stack*

## Angle Stacks

*Near Angle Stacks* *Mid Angle Stacks*  
*Processed far angle stack* *Processed near angle stack*  
*Processed mid angle stack* *Far Angle Stack*

## Velocity

*Stacking Velocity Field* *Migration Velocity Field*

## Other

*(GM) Processed Gravity Data*

For more information please contact Spectrum's Multi-Client teams:

**United States**

Spectrum Geo Inc.  
 t: +1 281 647 0602  
 f: +1 281 589 6111  
 e: mc-us@spectrumgeo.com

**United Kingdom**

Spectrum Geo Ltd.  
 t: +44 1483 730201  
 f: +44 1483 762620  
 e: mc-uk@spectrumgeo.com

**Singapore**

Spectrum Geo Pte Ltd.  
 t: +65 6827 9773  
 f: +65 6295 2567  
 e: mc-asia@spectrumgeo.com

**Australia**

Spectrum Geo Pty Ltd.  
 t: +61 8 9322 3700  
 f: +61 8 9322 1844  
 e: mc-au@spectrumgeo.com