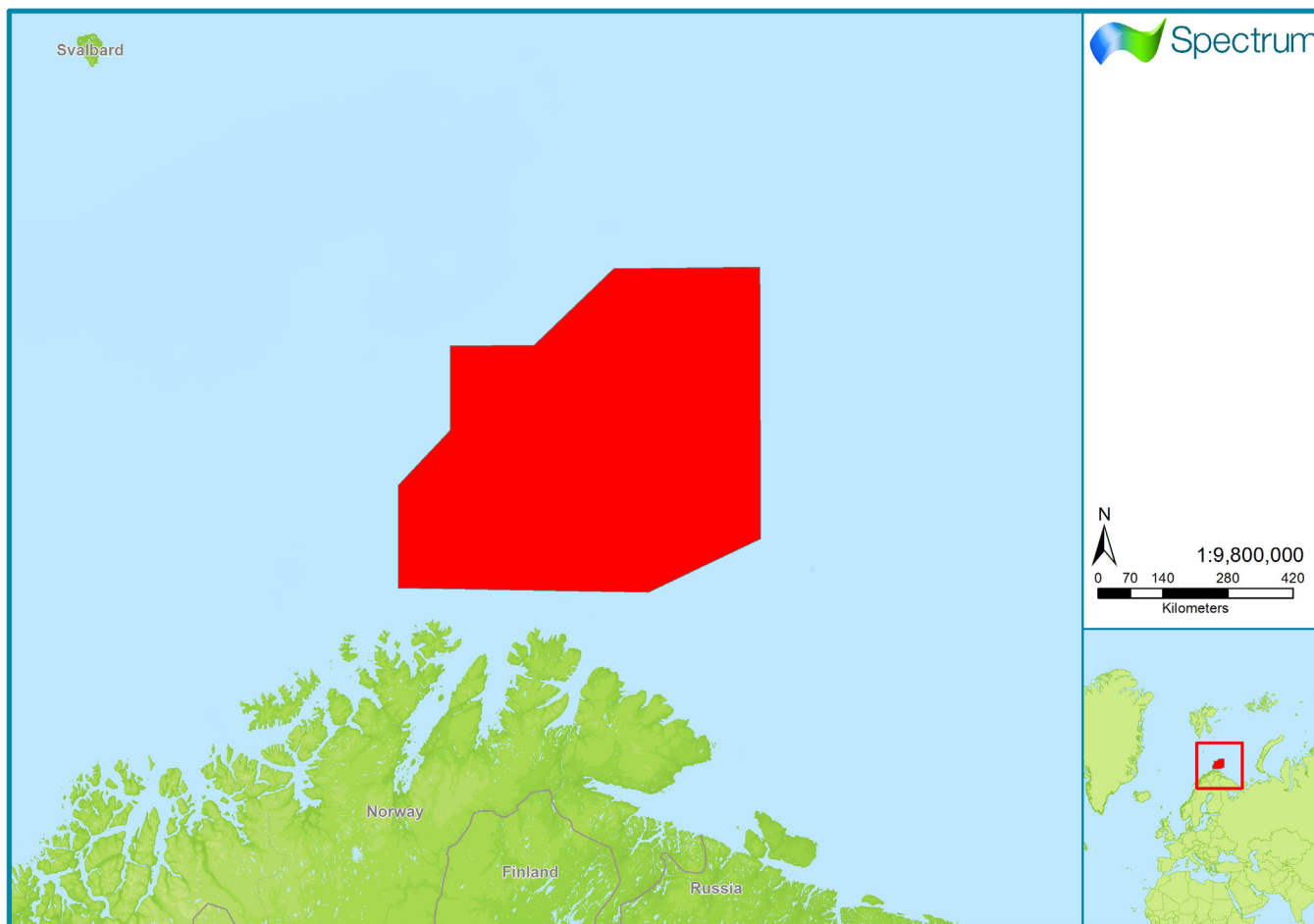


# Norway

## Barents Sea - BARE12 Geocube



Spectrum Multi-Client seismic coverage in RED

|                      |   |
|----------------------|---|
| Survey Name:         | Barents Sea - BARE12 Geocube  |
| Type:                | 3D Seismic  |
| Date:                | 2012  |
| Survey Size:         | 40,800 km <sup>2</sup>  |
| Processing Sequence: | Full details of the processing sequence are available upon request. |
| Deliverables:        | PSTM  |
|                      | PSTM Gathers  |
|                      | Velocities  |

For more information please contact Spectrum's Multi-Client teams:

**United States**

Spectrum Geo Inc.

Tel: +1 281 647 0602

Fax: +1 281 589 8111

Email: [mc-us@spectrumgeo.com](mailto:mc-us@spectrumgeo.com)

**United Kingdom**

Spectrum Geo Ltd.

Tel: +44 1483 730201

Fax: +44 1483 762620

Email: [mc-uk@spectrumgeo.com](mailto:mc-uk@spectrumgeo.com)

**Singapore:**

Spectrum Geo Pte Ltd.

Tel: +65 6827 9773

Fax: +66 6295 2567

Email: [mc-asia@spectrumgeo.com](mailto:mc-asia@spectrumgeo.com)

**Australia:**

Spectrum Geo Pty Ltd.

Tel: +61 8 9322 3700

Fax: +61 8 9322 1844

Email: [mc-au@spectrumgeo.com](mailto:mc-au@spectrumgeo.com)

**MULTI-CLIENT**

