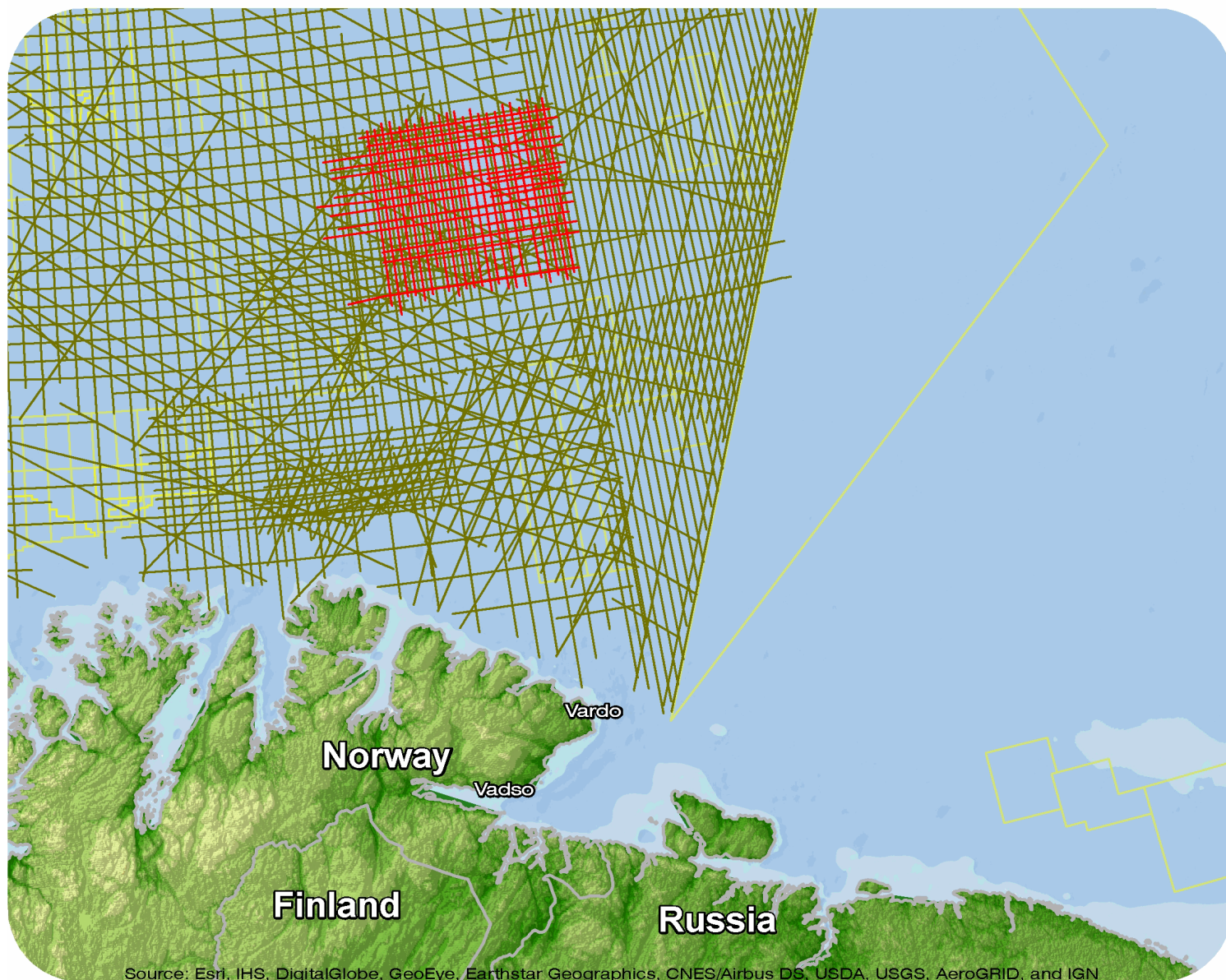


Norway

CNB-01 Repro 2012



Source: Esri, IHS, DigitalGlobe, GeoEye, Earthstar Geographics, CNES/Airbus DS, USDA, USGS, AeroGRID, and IGN

CNB01 Repro 2012

Survey Summary

Type: 2D
 Size: 3,620.48 km
 Vessel: MV Polar Princess
 Acquisition Year: June 2001

Acquisition Parameters

Source Volume: 4240 cu in
 Source Depth: 6 m
 Shot Interval: 25 m
 Record Length: 8 s
 Streamer Length: 7200 m
 Streamer Depth: 9 m
 Group Interval: 12.5 m

Deliverables

Migration

*Kirchhoff PSTM Stack F&S**Kirchhoff PSTM Stack Raw*

Angle Stacks

*KPSTM Super Far Ang Stack**KPSTM Far Ang Stack**KPSTM Near Ang Stack**KPSTM Mid Ang Stack*

Velocity

Stacking Velocities ASCII

Gathers

*PSTM Time Gaths**Pre Mig Time Gaths**Original acquisition: CNB-01 2D*

Raw Field Data

For more information please contact Spectrum's Multi-Client teams:

United States

Spectrum Geo Inc.
 t: +1 281 647 0602
 f: +1 281 589 6111
 e: mc-us@spectrumgeo.com

United Kingdom

Spectrum Geo Ltd.
 t: +44 1483 730201
 f: +44 1483 762620
 e: mc-uk@spectrumgeo.com

Singapore

Spectrum Geo Pte Ltd.
 t: +65 6827 9773
 f: +65 6295 2567
 e: mc-asia@spectrumgeo.com

Australia

Spectrum Geo Pty Ltd.
 t: +61 8 9322 3700
 f: +61 8 9322 1844
 e: mc-au@spectrumgeo.com