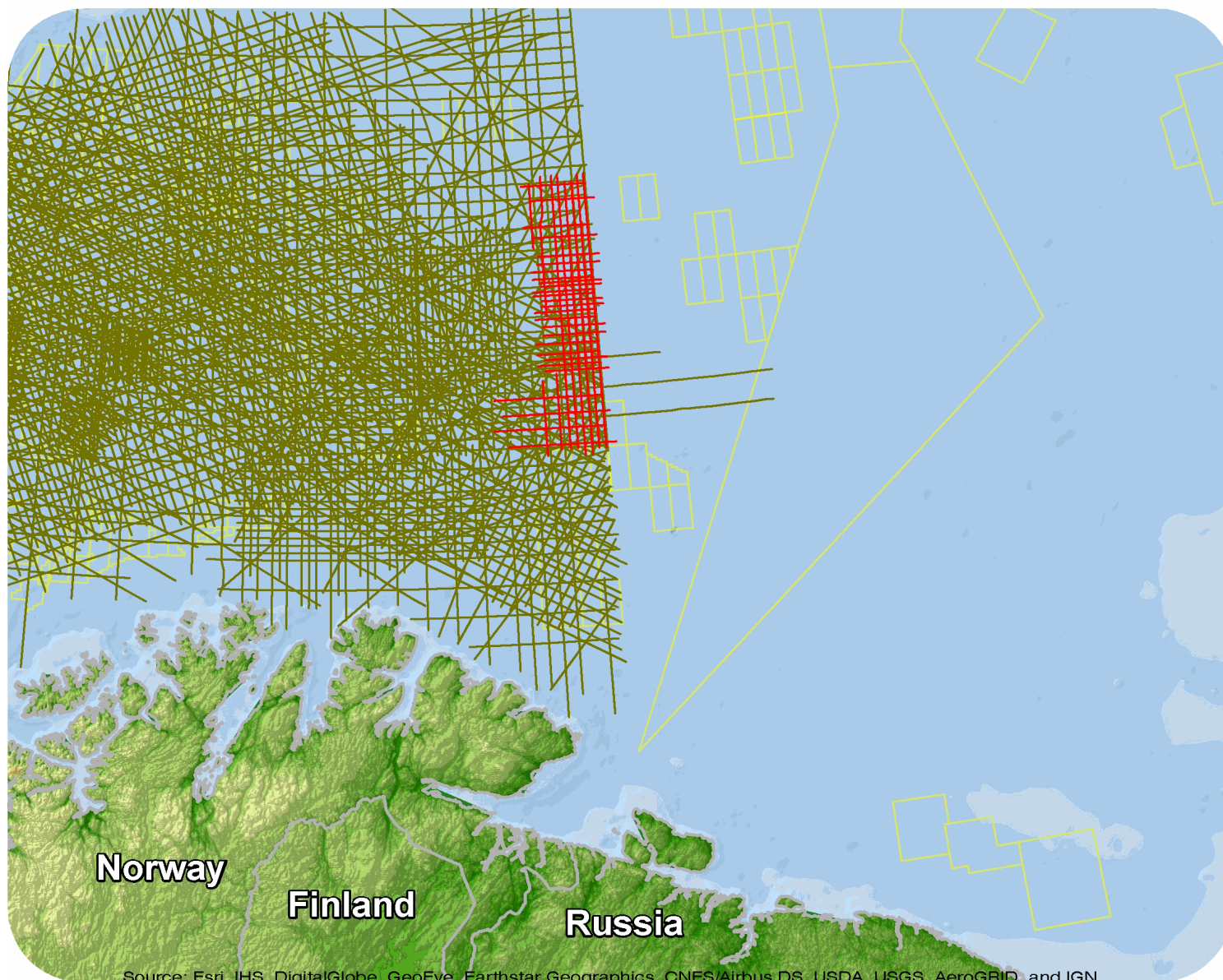




Norway

CNBE06 Repro 2012



Source: Esri, IHS, DigitalGlobe, GeoEye, Earthstar Geographics, CNES/Airbus DS, USDA, USGS, AeroGRID, and IGN

CNBE06 Repro 2012

Survey Summary

Type: 2D
 Size: 2,484.75 km
 Vessel: MV Bergen Surveyor
 Acquisition Year: December 2006

Acquisition Parameters

Source Volume: 4400 cu in
 Source Depth: 6 m
 Shot Interval: 25 m
 Record Length: 10 s
 Streamer Length: Various
 Streamer Depth: 8 m
 Group Interval: 12.5 m

Deliverables

Migration

Kirchhoff PSTM Stack F&S

Kirchhoff PSTM Stack Raw

Angle Stacks

KPSTM Super Far Ang Stack

KPSTM Far Ang Stack

KPSTM Near Ang Stack

KPSTM Mid Ang Stack

Velocity

Stacking Velocities ASCII

Gathers

PSTM Time Gaths

Pre Mig Time Gaths

Original acquisition: CNBE06

Kirchhoff PSTM Stack Filt

Raw Field Data

For more information please contact Spectrum's Multi-Client teams:

United States

Spectrum Geo Inc.
 t: +1 281 647 0602
 f: +1 281 589 6111
 e: mc-us@spectrumgeo.com

United Kingdom

Spectrum Geo Ltd.
 t: +44 1483 730201
 f: +44 1483 762620
 e: mc-uk@spectrumgeo.com

Singapore

Spectrum Geo Pte Ltd.
 t: +65 6827 9773
 f: +65 6295 2567
 e: mc-asia@spectrumgeo.com

Australia

Spectrum Geo Pty Ltd.
 t: +61 8 9322 3700
 f: +61 8 9322 1844
 e: mc-au@spectrumgeo.com