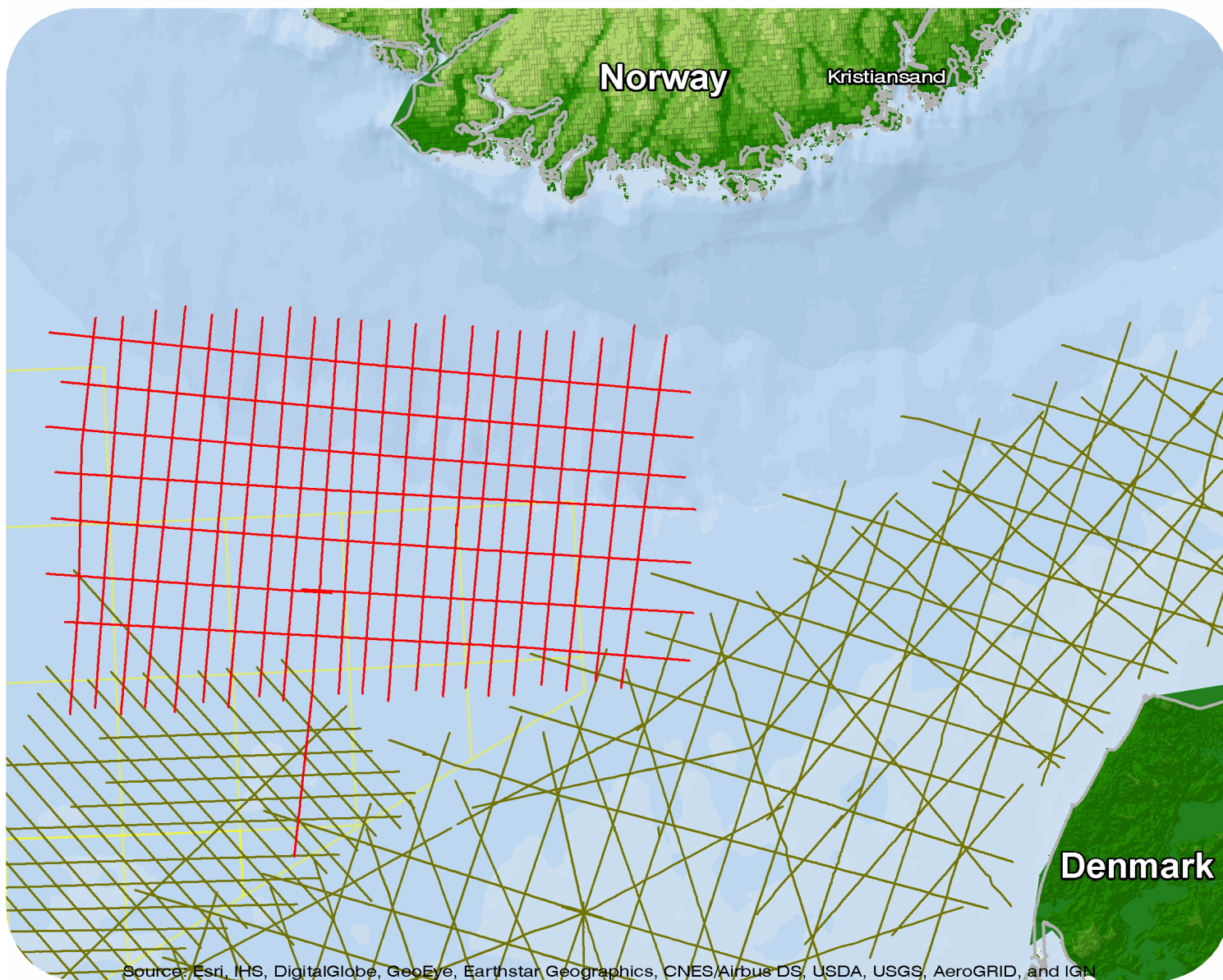


Norway

Farsund Basin 1992 Repro 2003



Source: Esri, IHS, DigitalGlobe, GeoEye, Earthstar Geographics, CNES/Airbus DS, USDA, USGS, AeroGRID, and IGN

Farsund Basin 1992 Repro 2003 FB92RE03

Survey Summary

Type: 2D
 Size: 2,293.28 km
 Vessel: MV Geo Scanner
 Acquisition Year: October 1991

Acquisition Parameters

Source Volume: 800 cu in
 Source Depth: 4 m
 Shot Interval: 25 m
 Record Length: 6 s
 Streamer Length: 3000 m
 Streamer Depth: 6 m
 Group Interval: 25 m

Deliverables

Migration

Raw stacked migration- unscaled- full volume

Final migration- scaled- full volume

Final Migration- unscaled- full volume

Angle Stacks

Raw stacked migration- unscaled- far

Final migration: unscaled Near

Final migration- unscaled- far

Raw stacked migration- unscaled- near

Velocity

Stacking Velocities - ASCII

Migration Velocities - ASCII

Original acquisition: Farsund Basin 1992

Field data

For more information please contact Spectrum's Multi-Client teams:

United States

Spectrum Geo Inc.
 t: +1 281 647 0602
 f: +1 281 589 6111
 e: mc-us@spectrumgeo.com

United Kingdom

Spectrum Geo Ltd.
 t: +44 1483 730201
 f: +44 1483 762620
 e: mc-uk@spectrumgeo.com

Singapore

Spectrum Geo Pte Ltd.
 t: +65 6827 9773
 f: +65 6295 2567
 e: mc-asia@spectrumgeo.com

Australia

Spectrum Geo Pty Ltd.
 t: +61 8 9322 3700
 f: +61 8 9322 1844
 e: mc-au@spectrumgeo.com