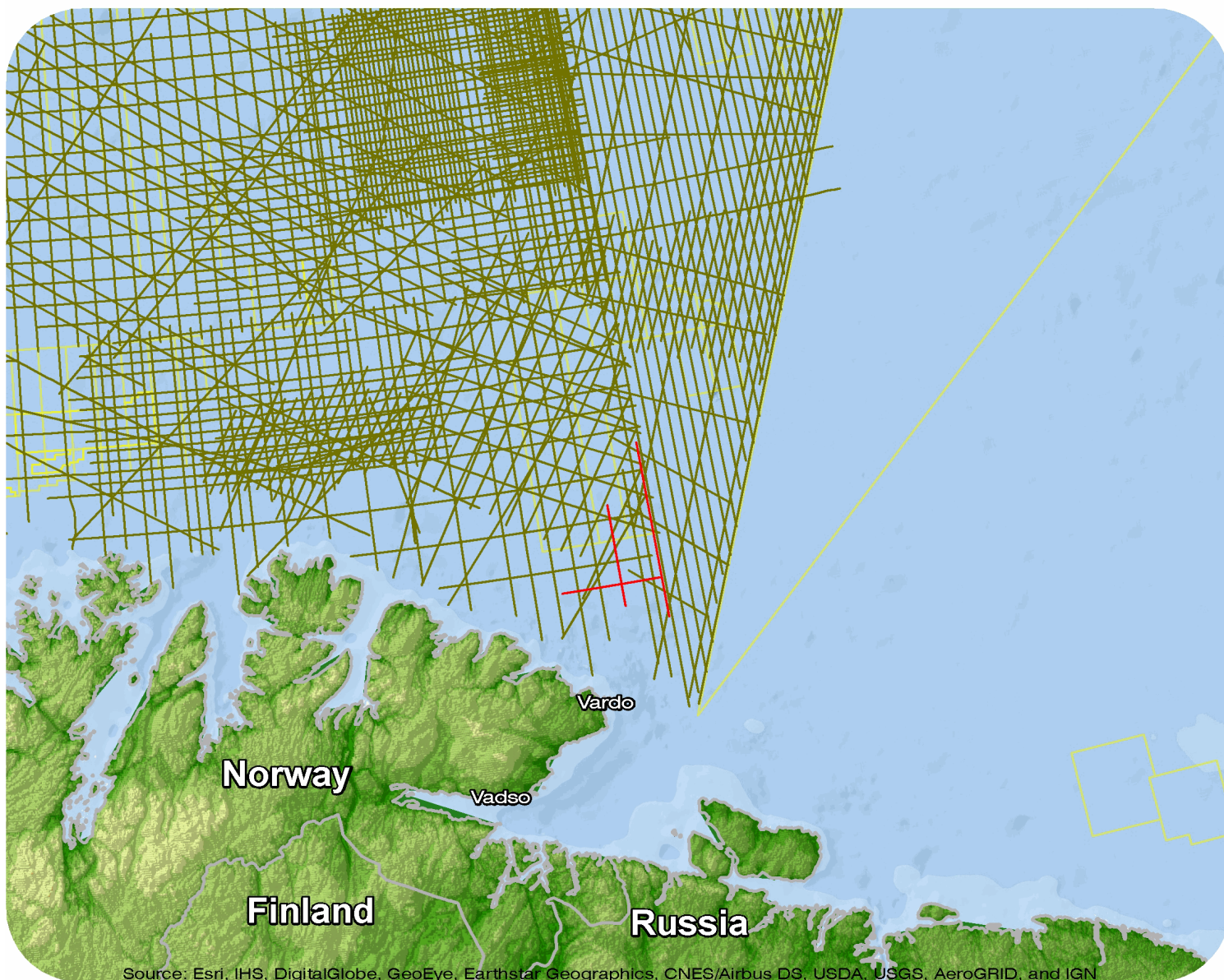




# Norway

## Finnmark East Carbonate IKU 1990



## Finnmark East Carbonate IKU 1990 FECIKU

## Survey Summary

Type: 2D  
 Size: 162.79 km  
 Vessel: MV Geo Scanner  
 Acquisition Year: July 1990

## Acquisition Parameters

Source Volume: 800 cu in  
 Source Depth: 4 m  
 Shot Interval: 12.5 m  
 Record Length: 2.5 s  
 Streamer Length: 3000 m  
 Streamer Depth: 6 m  
 Group Interval: 25 m

## Deliverables

## Migration

*Final Migration**Final Migration*

## Velocity

*Velocity - ESSOV2*

## Other

*Field data*

For more information please contact Spectrum's Multi-Client teams:

**United States**

Spectrum Geo Inc.  
 t: +1 281 647 0602  
 f: +1 281 589 6111  
 e: mc-us@spectrumgeo.com

**United Kingdom**

Spectrum Geo Ltd.  
 t: +44 1483 730201  
 f: +44 1483 762620  
 e: mc-uk@spectrumgeo.com

**Singapore**

Spectrum Geo Pte Ltd.  
 t: +65 6827 9773  
 f: +65 6295 2567  
 e: mc-asia@spectrumgeo.com

**Australia**

Spectrum Geo Pty Ltd.  
 t: +61 8 9322 3700  
 f: +61 8 9322 1844  
 e: mc-au@spectrumgeo.com