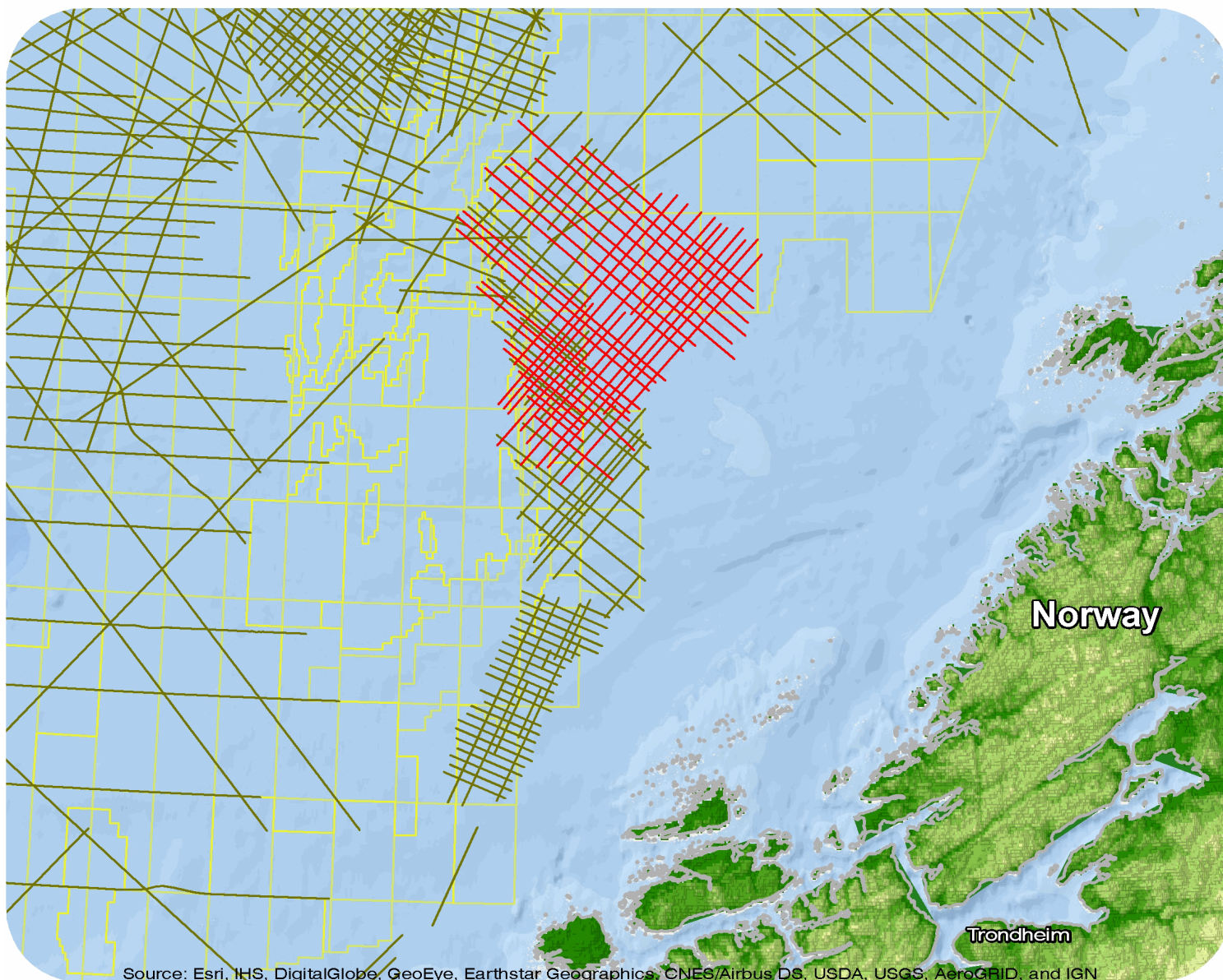


Norway

HTE Margin 1999 Repro 2009



Source: Esri, IHS, DigitalGlobe, GeoEye, Earthstar Geographics, CNES/Airbus DS, USDA, USGS, AeroGRID, and IGN

Halten Terrace East/Margin 1999 Reprocessed 2009

Survey Summary

Type: 2D
 Size: 3,139.05 km
 Vessel: MV Geo Scanner
 Acquisition Year: March 1999

Acquisition Parameters

Source Volume: 880 cu in
 Source Depth: 6 m
 Shot Interval: 25 m
 Record Length: 7 s
 Streamer Length: 3000 m
 Streamer Depth: 7 m
 Group Interval: 25 m

Deliverables

Migration

*Raw migrated stack**Final migrated stack*

Angle Stacks

*Final Angle Stack 5-15**Raw Angle Stack 35-45**Raw Angle Stack 25-35**Raw Angle Stack 15-25**Raw Angle Stack 5-15**Final Angle Stack 35-45**Final Angle Stack 25-35**Final Angle Stack 15-25*

Velocity

*Smoothed migration and residual stacking velocities**Residual stacking velocity-trace volumes**Smoothed migration velocity-trace volumes**Residual stacking velocity-trace volumes**Smoothed migration velocity-trace volumes**Original acquisition: Halten Terrace East/ Margin 1999*

Field data

Raw Stack Outer Volume _HTM99

For more information please contact Spectrum's Multi-Client teams:

United States

Spectrum Geo Inc.
 t: +1 281 647 0602
 f: +1 281 589 6111
 e: mc-us@spectrumgeo.com

United Kingdom

Spectrum Geo Ltd.
 t: +44 1483 730201
 f: +44 1483 762620
 e: mc-uk@spectrumgeo.com

Singapore

Spectrum Geo Pte Ltd.
 t: +65 6827 9773
 f: +65 6295 2567
 e: mc-asia@spectrumgeo.com

Australia

Spectrum Geo Pty Ltd.
 t: +61 8 9322 3700
 f: +61 8 9322 1844
 e: mc-au@spectrumgeo.com