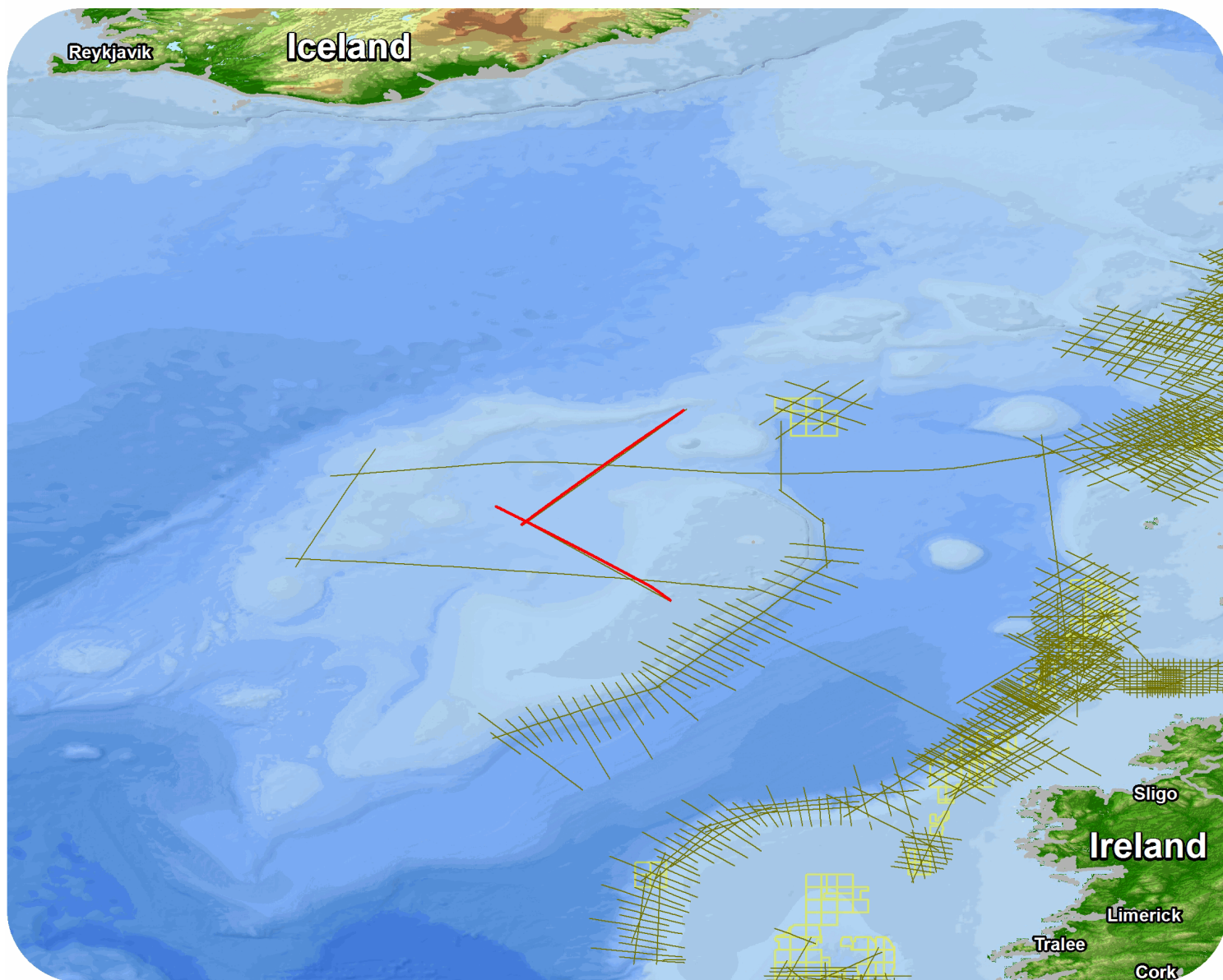




UK

Hatton Rockall 2007 / BGS93re07



Hatton Rockall 2007 / BGS93re07

Survey Summary

Type: 2D
 Size: 401.35 km
 Vessel: Unknown
 Acquisition Year: August 1993

Acquisition Parameters

Source Volume: 9390 cu in
 Source Depth: 10 m
 Shot Interval: 50 m
 Record Length: 18 s
 Streamer Length: 6000 m
 Streamer Depth: 15 m
 Group Interval: 25 m

Deliverables

Migration

Raw Stack *Final Migration- scaled*

Angle Stacks

Raw Far Angle Stacks *Raw Mid Angle Stacks*
Raw Near Stacks

Velocity

Velocity - ESSOV2

Gathers

NMO Corrected PSTM Gathers

For more information please contact Spectrum's Multi-Client teams:

United States

Spectrum Geo Inc.
 t: +1 281 647 0602
 f: +1 281 589 6111
 e: mc-us@spectrumgeo.com

United Kingdom

Spectrum Geo Ltd.
 t: +44 1483 730201
 f: +44 1483 762620
 e: mc-uk@spectrumgeo.com

Singapore

Spectrum Geo Pte Ltd.
 t: +65 6827 9773
 f: +65 6295 2567
 e: mc-asia@spectrumgeo.com

Australia

Spectrum Geo Pty Ltd.
 t: +61 8 9322 3700
 f: +61 8 9322 1844
 e: mc-au@spectrumgeo.com