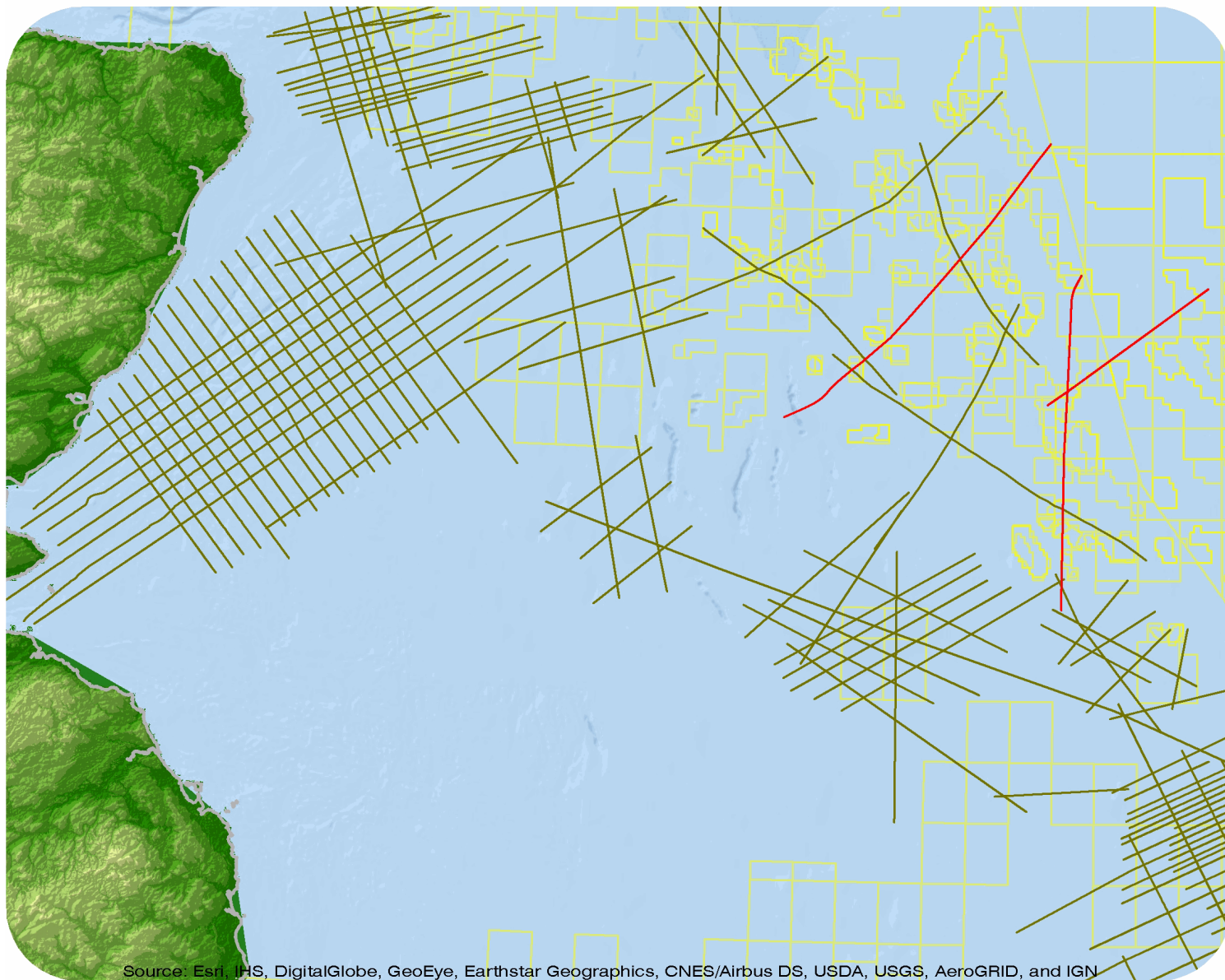




United Kingdom

VERCG 00



Source: Esri, IHS, DigitalGlobe, GeoEye, Earthstar Geographics, CNES/Airbus DS, USDA, USGS, AeroGRID, and IGN

VERCG00

Survey Summary

Type: 2D
 Size: 277.10 km
 Vessel: RV Professor Polshkov
 Acquisition Year: December 2000

Acquisition Parameters

Source Volume: 3800 cu in
 Source Depth: 7 m
 Shot Interval: 25 m
 Record Length: 8 s
 Streamer Length: 6000 m
 Streamer Depth: 9 m
 Group Interval: 12.5 m

Deliverables

Migration

Kirchhoff PSTM Stack F&S

Velocity

Stacking Velocities ASCII

RMS Mig Velocities ASCII

Other

Raw Field Data

DMO + Const Vel PSTM Angle Stack Far

DMO + Const Vel PSTM Near Angle Stack

For more information please contact Spectrum's Multi-Client teams:

United States

Spectrum Geo Inc.
 t: +1 281 647 0602
 f: +1 281 589 6111
 e: mc-us@spectrumgeo.com

United Kingdom

Spectrum Geo Ltd.
 t: +44 1483 730201
 f: +44 1483 762620
 e: mc-uk@spectrumgeo.com

Singapore

Spectrum Geo Pte Ltd.
 t: +65 6827 9773
 f: +65 6295 2567
 e: mc-asia@spectrumgeo.com

Australia

Spectrum Geo Pty Ltd.
 t: +61 8 9322 3700
 f: +61 8 9322 1844
 e: mc-au@spectrumgeo.com