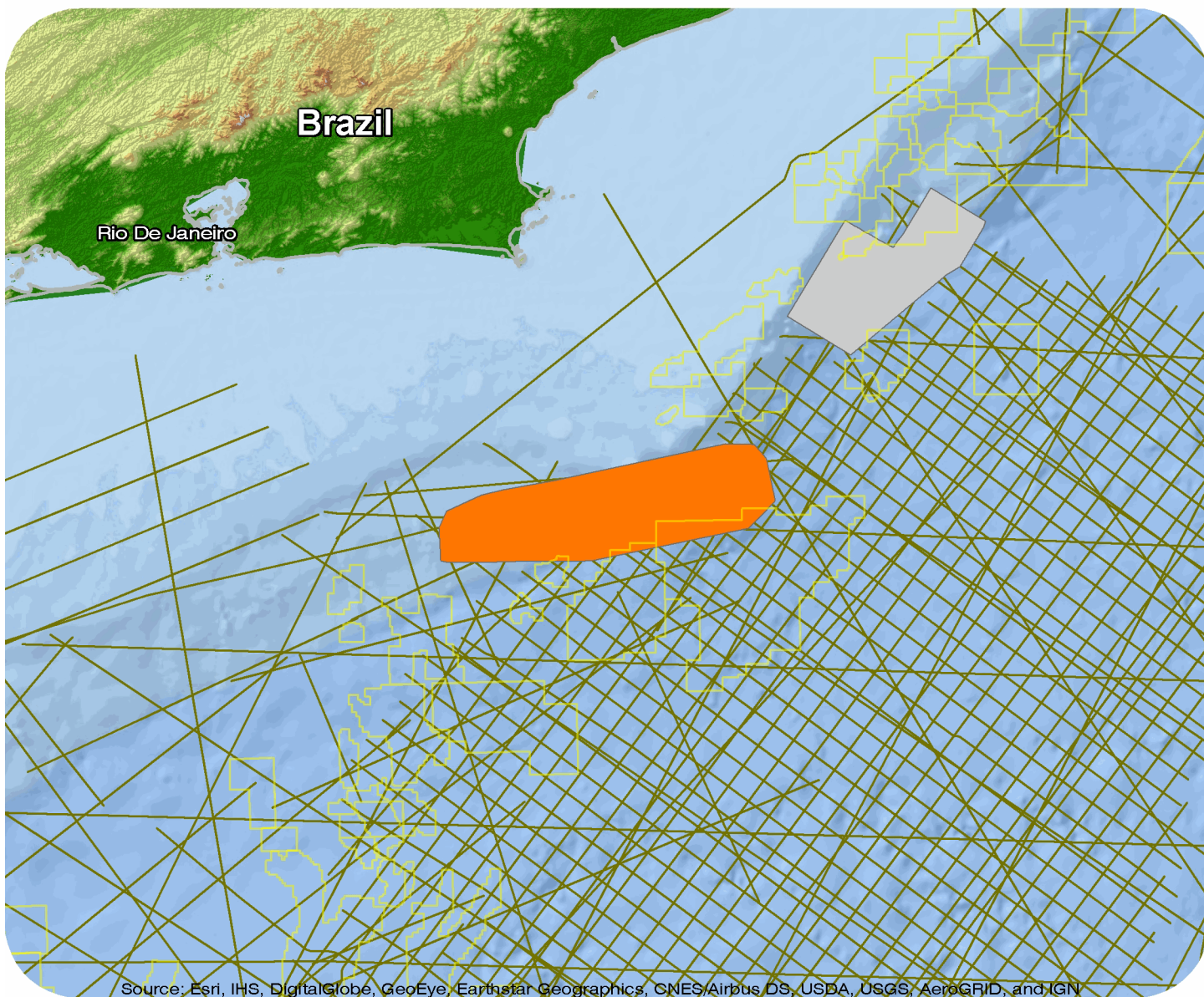




# Brazil

## Alto Cabo Frio 3D



Source: Esri, IHS, DigitalGlobe, GeoEye, Earthstar Geographics, CNES/Airbus DS, USDA, USGS, AeroGRID, and IGN

## Alto Cabo Frio 3D

## Survey Summary

Type: 3D  
 Size: 4,105.46 km<sup>2</sup>  
 Vessel: M/V Geco Eagle  
 Acquisition Year: October 1999

## Acquisition Parameters

Source Volume: 3874 cu in  
 Source Depth: 6 m  
 Shot Interval: 25 m  
 Record Length: 7 s

## Deliverables

## Migration

<i>Raw Stack</i>	<i>TVS Stack</i>
<i>Final Beam Stack Wide Raw</i>	<i>Final Beam Stack Decimated CRP gather wide raw</i>
<i>Final Beam Stack Wide Demult ntm</i>	<i>Final Beam Stack Decimated CRP gather wide demult</i>
<i>Sediment Flood Stack</i>	<i>Salt Flood Stack</i>

## Angle Stacks

<i>Far Offset Stack</i>	<i>Mid Offset Stack</i>
<i>Near Offset Stack</i>	<i>Far Angle Stack</i>
<i>Mid Angle Stacks</i>	<i>Near Angle Stacks</i>

## Velocity

<i>Migration Velocity</i>	<i>Final PSDM Velocity Models</i>
<i>Sediment only PSDM Velocity Model</i>	<i>Final Stacking Velocities</i>

For more information please contact Spectrum's Multi-Client teams:

**United States**

Spectrum Geo Inc.  
 t: +1 281 647 0602  
 f: +1 281 589 6111  
 e: mc-us@spectrumgeo.com

**United Kingdom**

Spectrum Geo Ltd.  
 t: +44 1483 730201  
 f: +44 1483 762620  
 e: mc-uk@spectrumgeo.com

**Singapore**

Spectrum Geo Pte Ltd.  
 t: +65 6827 9773  
 f: +65 6295 2567  
 e: mc-asia@spectrumgeo.com

**Australia**

Spectrum Geo Pty Ltd.  
 t: +61 8 9322 3700  
 f: +61 8 9322 1844  
 e: mc-au@spectrumgeo.com