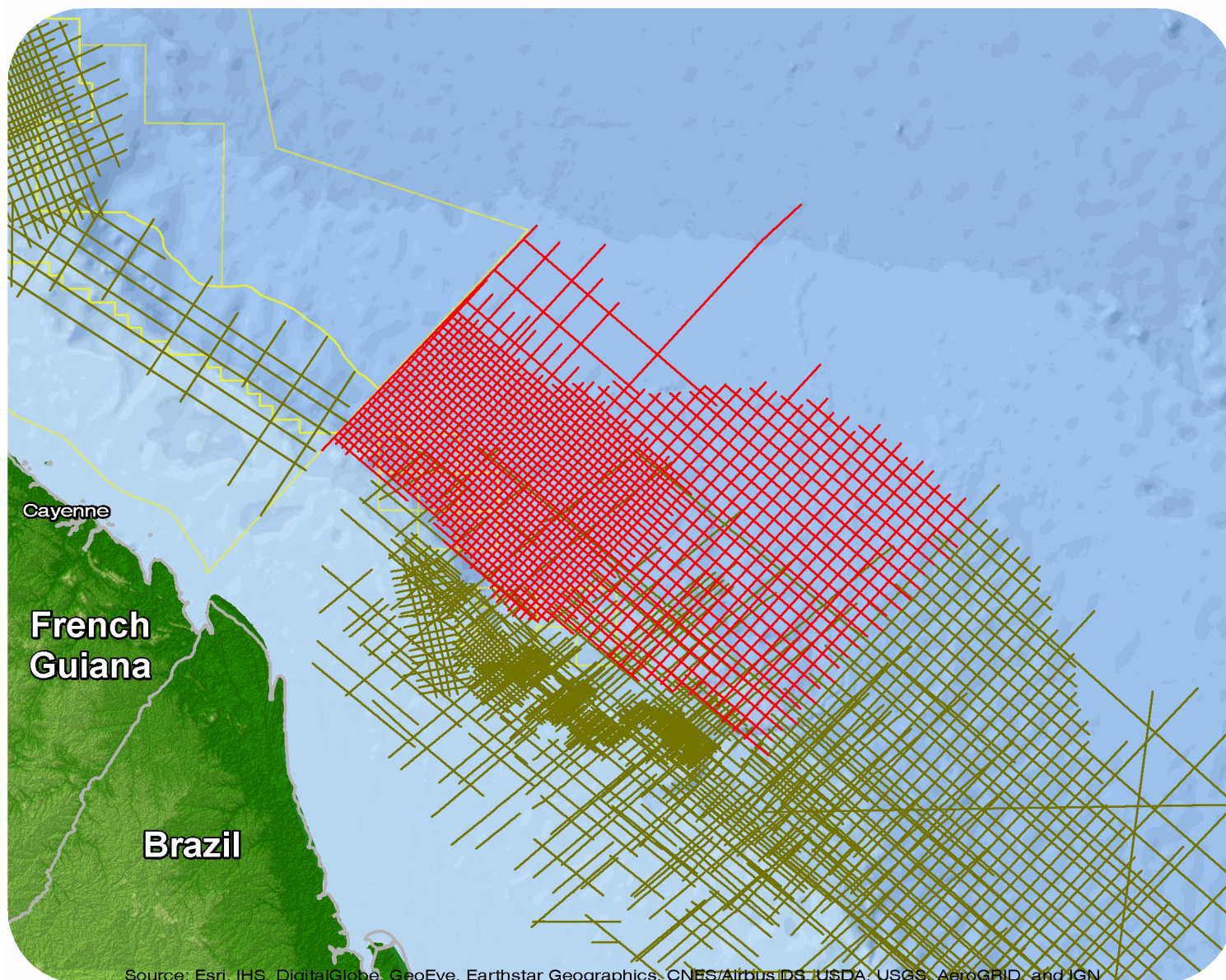




Brazil

Foz do Amazonas 2D



Source: Esri, IHS, DigitalGlobe, GeoEye, Earthstar Geographics, CNES/Airbus DS, USDA, USGS, AeroGRID, and IGN

Foz Do Amazonas Phase 2

Survey Summary

Type: 2D
 Size: 6,633.83 km
 Vessel: MV Hawk Explorer
 Acquisition Year: November 2012

Acquisition Parameters

Source Volume: 5000 cu in
 Source Depth: 10 m
 Shot Interval: 37.5 m
 Record Length: 13.5 s
 Streamer Length: 10200 m
 Streamer Depth: 15 m
 Group Interval: 12.5 m

Deliverables

Migration

Kirchhoff PSTM Stack F&S

Kirchhoff PSTM Stack Rel Amp

Kirchhoff PSDM Re-Depth Stack

Kirchhoff PSDM Stack

D2T

KPSDM Stack (Depth to Time)

Angle Stacks

KPSTM Near Ang Stack

KPSTM Mid Ang Stack

KPSTM Far Ang Stack

Velocity

Stacking Velocities

3D Reg Vel Time Model for Depth Conv (2D)

3D Reg Vel Depth Model for Depth Conv (3D)

PSDM Depth-Int Vel Model

Gathers

PSTM Time Gaths

Other

Gravity and Magnetic Report

Proc Gravity and Magnetic Data

Raw Field Data

For more information please contact Spectrum's Multi-Client teams:

United States

Spectrum Geo Inc.
 t: +1 281 647 0602
 f: +1 281 589 6111
 e: mc-us@spectrumgeo.com

United Kingdom

Spectrum Geo Ltd.
 t: +44 1483 730201
 f: +44 1483 762620
 e: mc-uk@spectrumgeo.com

Singapore

Spectrum Geo Pte Ltd.
 t: +65 6827 9773
 f: +65 6295 2567
 e: mc-asia@spectrumgeo.com

Australia

Spectrum Geo Pty Ltd.
 t: +61 8 9322 3700
 f: +61 8 9322 1844
 e: mc-au@spectrumgeo.com