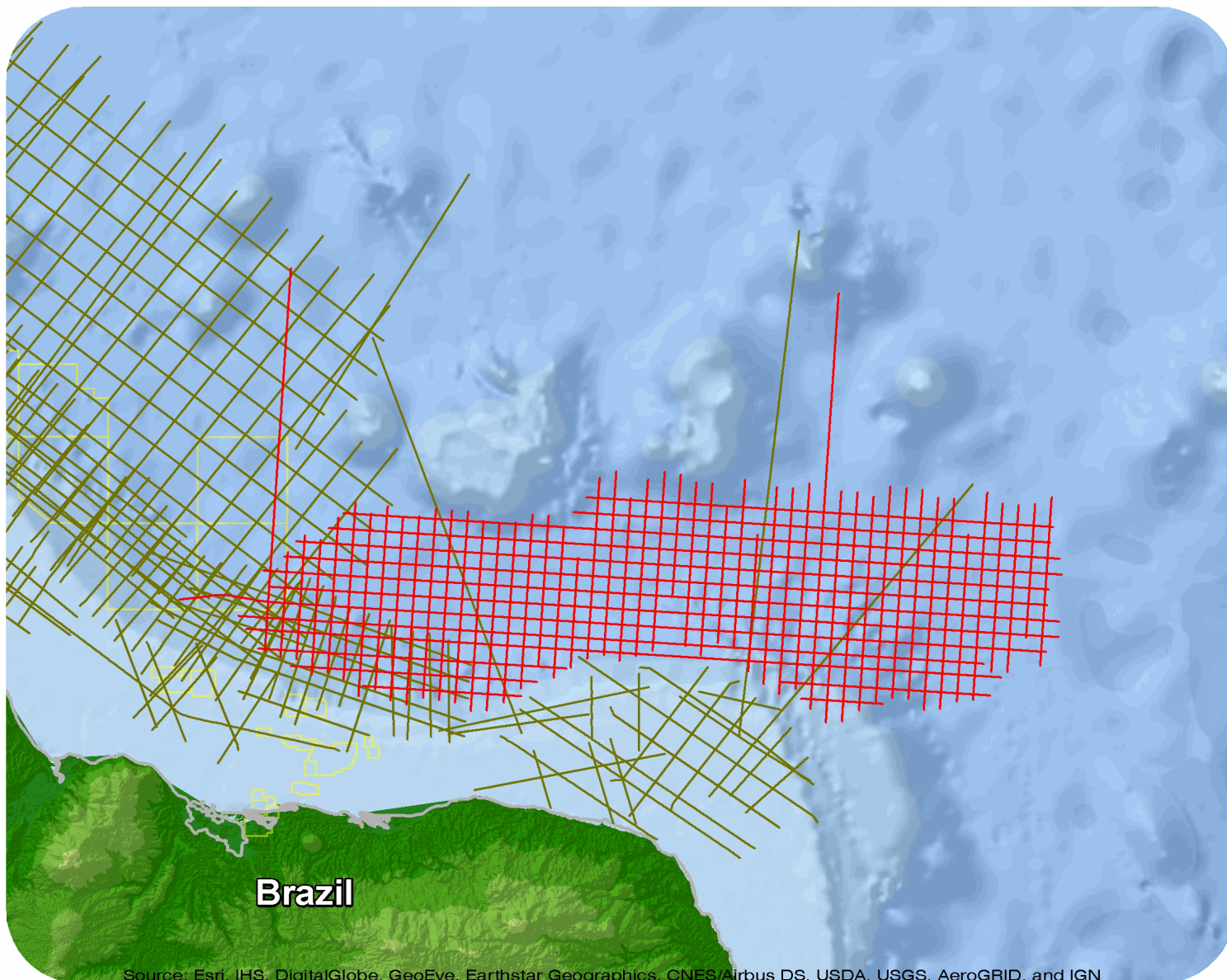




Brazil

Potiguar Phase 2



Source: Esri, IHS, DigitalGlobe, GeoEye, Earthstar Geographics, CNES/Airbus DS, USDA, USGS, AeroGRID, and IGN

Potiguar Phase 2

Survey Summary

Type: 2D
 Size: 5,662.93 km
 Vessel: BGP Challenger
 Acquisition Year: March 2017

Acquisition Parameters

Source Volume: 4260 cu in
 Source Depth: 8 m
 Shot Interval: 25 m
 Record Length: 15 s
 Streamer Length: 10050 m
 Streamer Depth: 15 m
 Group Interval: 12.5 m

Deliverables

Migration

<i>Kirchhoff PSTM Stack Scaled</i>	<i>KPSDM Anisotr VTI Raw</i>
<i>KPSDM Anisotr VTI F&S</i>	<i>KPSDM Anisotr VTI Scaled</i>
<i>KPSDM Anisotr VTI Filt</i>	<i>Kirchhoff PSTM Stack Filt</i>
<i>Kirchhoff PSTM Stack Filtered De-ghosted</i>	<i>KPSDM Anisotr VTI F&S re-depth</i>
<i>Kirchhoff PSDM Anisotr VTI Scaled De-ghosted</i>	<i>Kirchhoff PSDM Anisotr VTI Re-Depth Stack F&S De-ghosted</i>
<i>Kirchhoff PSDM Anisotr VTI Stack FS De-ghosted</i>	<i>Kirchhoff PSTM Stack Scaled De-ghosted</i>
<i>Kirchhoff PSTM Stack F&S De-ghosted</i>	<i>Kirchhoff PSDM Anisotr VTI Filt De-ghosted</i>
<i>Kirchhoff PSTM Stack F&S</i>	<i>KPSDM Anisotr VTI Raw De-ghosted</i>

D2T

<i>KPSDM Anisotr VTI Depth to Time F&S</i>	<i>KPSDM Stack Anisotr VTI (D2T) F&S De-ghosted</i>
--	---

Angle Stacks

<i>KPSDM Anisotr VTI Ultra Far Angle Stack</i>	<i>KPSDM Anisotr VTI Near Angle Stack</i>
<i>KPSDM Anisotr VTI Mid Angle Stack</i>	<i>KPSDM Anisotr VTI Far Angle Stack</i>
<i>KPSDM Anisotr VTI Far Angle Stack De-Ghosted</i>	<i>KPSDM Anisotr VTI UltraFar Angle Stack De-Ghosted</i>
<i>KPSDM Anisotr VTI Near Angle Stack De-Ghosted</i>	<i>KPSDM Anisotr VTI Mid Angle Stack De-Ghosted</i>
<i>KPSTM Ultra Far Ang Stack De-ghosted</i>	<i>KPSTM Far Ang Stack De-ghosted</i>
<i>KPSTM Mid Ang Stack De-ghosted</i>	<i>KPSTM Near Ang Stack De-ghosted</i>
<i>KPSTM Ultra Far Ang Stack</i>	<i>KPSTM Near Ang Stack</i>
<i>KPSTM Mid Ang Stack</i>	<i>KPSTM Far Ang Stack</i>

Velocity

<i>Depth Interval Velocity Model Re-depth</i>	<i>Depth Epsilon Model</i>
<i>Depth Delta Model</i>	<i>Depth Interval Velocity Model</i>
<i>Stacking Velocities</i>	<i>RMS Mig Velocities</i>

Gathers

<i>PSTMTIME Gaths De-ghosted</i>	<i>PSTM Time Gaths</i>
----------------------------------	------------------------

Other

<i>Raw Field Data</i>	<i>Salt Body Horizons for Model Building</i>
<i>Proc Gravity and Magnetic Data</i>	<i>Gravity and Magnetic Report</i>