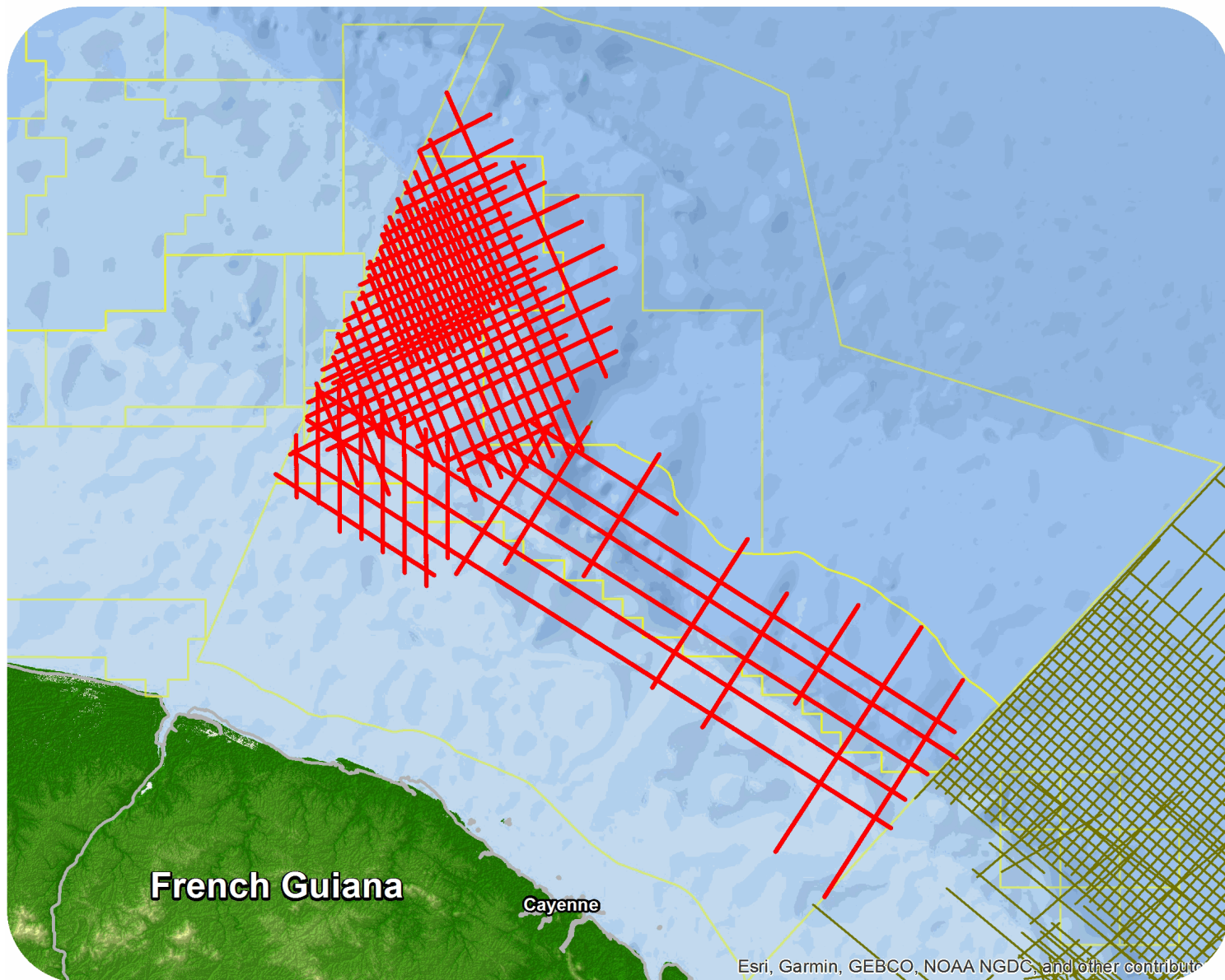




French Guiana

French Guiana Repro 2013



French Guiana Repro 2013

Survey Summary

Type: 2D
 Size: 7,718.88 km
 Vessel: MV Polishkov
 Acquisition Year: February 2003

Acquisition Parameters

Source Volume: 3730 cu in
 Source Depth: 5 m
 Shot Interval: 25 m
 Record Length: 10 s
 Streamer Length: 6000 m
 Streamer Depth: 8 m
 Group Interval: 12.5 m

Deliverables

Migration

Kirchhoff PSDM Re-Depth Stack F&S
Kirchhoff PSTM Stack Rel Amp
Kirchhoff PSTM Stack Raw

Kirchhoff PSDM Stack F&S
Kirchhoff PSTM Stack F&S
Kirchhoff PSDM Stack

D2T

KPSDM Stack (Depth to Time)

KPSDM Stack (Depth to Time) F&S

Angle Stacks

KPSTM Near Ang Stack
KPSTM Far Ang Stack

KPSTM Mid Ang Stack

Velocity

Stacking Velocities
3D Reg Vel Depth Model for Depth Conv (2D)

PSDM Depth-Int Vel Model

Original acquisition: French Guyane 2002

Final Migration - Far
 Final Migration - Near
 PSTM Gathers
 Raw Migration - Mid

Final Migration - Mid
 Gravity and Magnetics
 Raw Migration - Far
 Raw Migration - Near

For more information please contact Spectrum's Multi-Client teams:

United States

Spectrum Geo Inc.
 t: +1 281 647 0602
 f: +1 281 589 6111
 e: mc-us@spectrumgeo.com

United Kingdom

Spectrum Geo Ltd.
 t: +44 1483 730201
 f: +44 1483 762620
 e: mc-uk@spectrumgeo.com

Singapore

Spectrum Geo Pte Ltd.
 t: +65 6827 9773
 f: +65 6295 2567
 e: mc-asia@spectrumgeo.com

Australia

Spectrum Geo Pty Ltd.
 t: +61 8 9322 3700
 f: +61 8 9322 1844
 e: mc-au@spectrumgeo.com