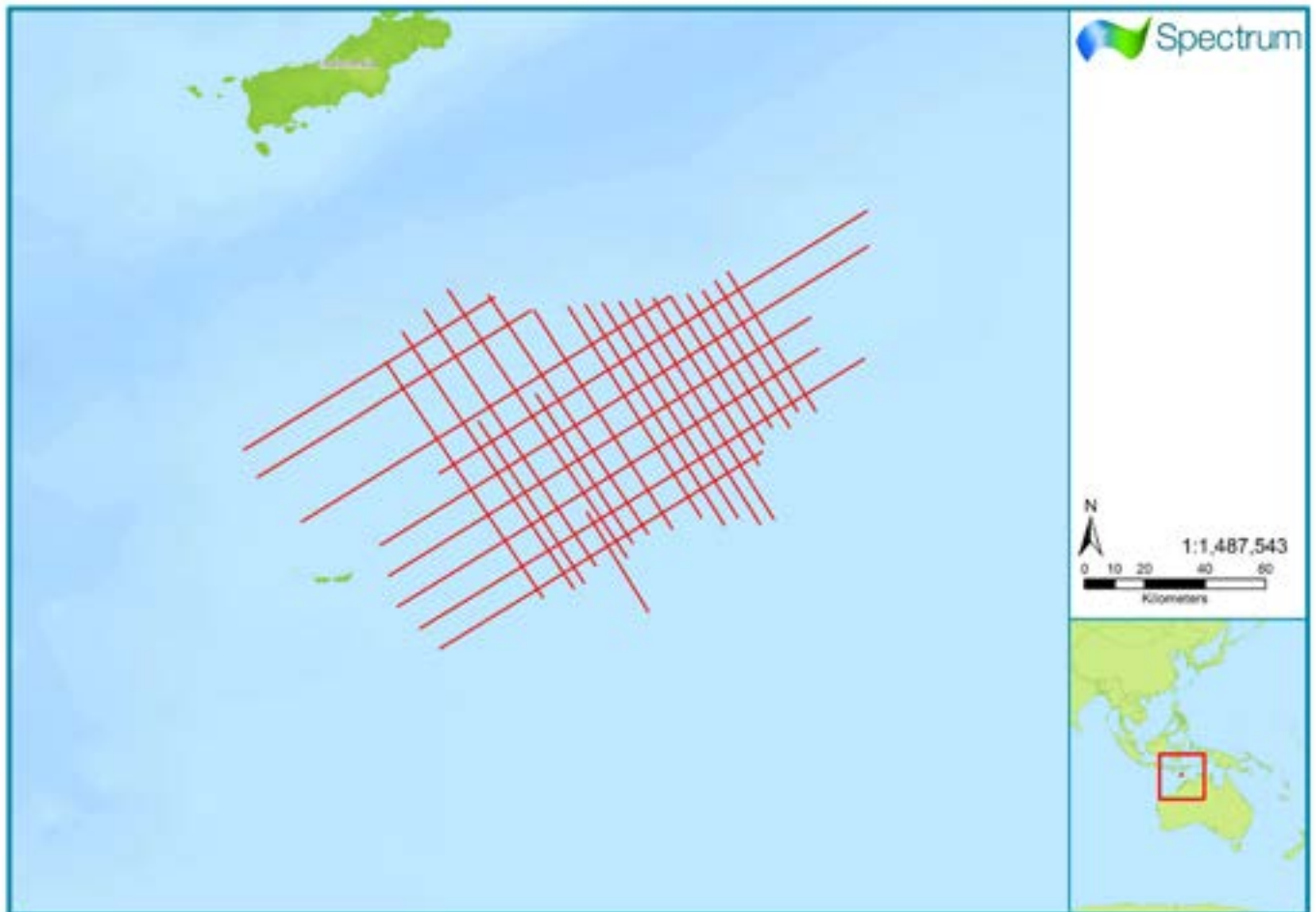


# North West Australia

Ashmore North PSTM Repro 2008



Spectrum Multi-Client seismic coverage in RED

MULTI-CLIENT



Survey Name:	Ashmore North PSTM Repro 2008
Type:	2D Reprocessed Seismic
Date:	Reprocessed 2008
Survey Size:	2,866 km
Acquisition Parameters:	Full details of the acquisition parameters are available on request
Processing Parameters:	Full details of the processing sequence and deliverables are available on request
Deliverables:	Final PSTM stacks, RAW stacks, Angle stacks

For more information please contact Spectrum's Multi-Client teams:

**United States**

Spectrum Geo Inc.  
 Tel: +1 281 647 0602  
 Fax: +1 281 589 8111  
 Email: mc-us@spectrumgeo.com

**United Kingdom**

Spectrum Geo Ltd.  
 Tel: +44 1483 730201  
 Fax: +44 1483 762620  
 Email: mc-uk@spectrumgeo.com

**Singapore:**

Spectrum GeoPte Ltd.  
 Tel: +65 6827 9773  
 Fax: +66 6295 2567  
 Email: mc-asia@spectrumgeo.com

**Australia:**

Spectrum Geo Pty Ltd.  
 Tel: +61 8 9322 3700  
 Fax: +61 8 9322 1844  
 Email: mc-au@spectrumgeo.com

**MULTI-CLIENT**

