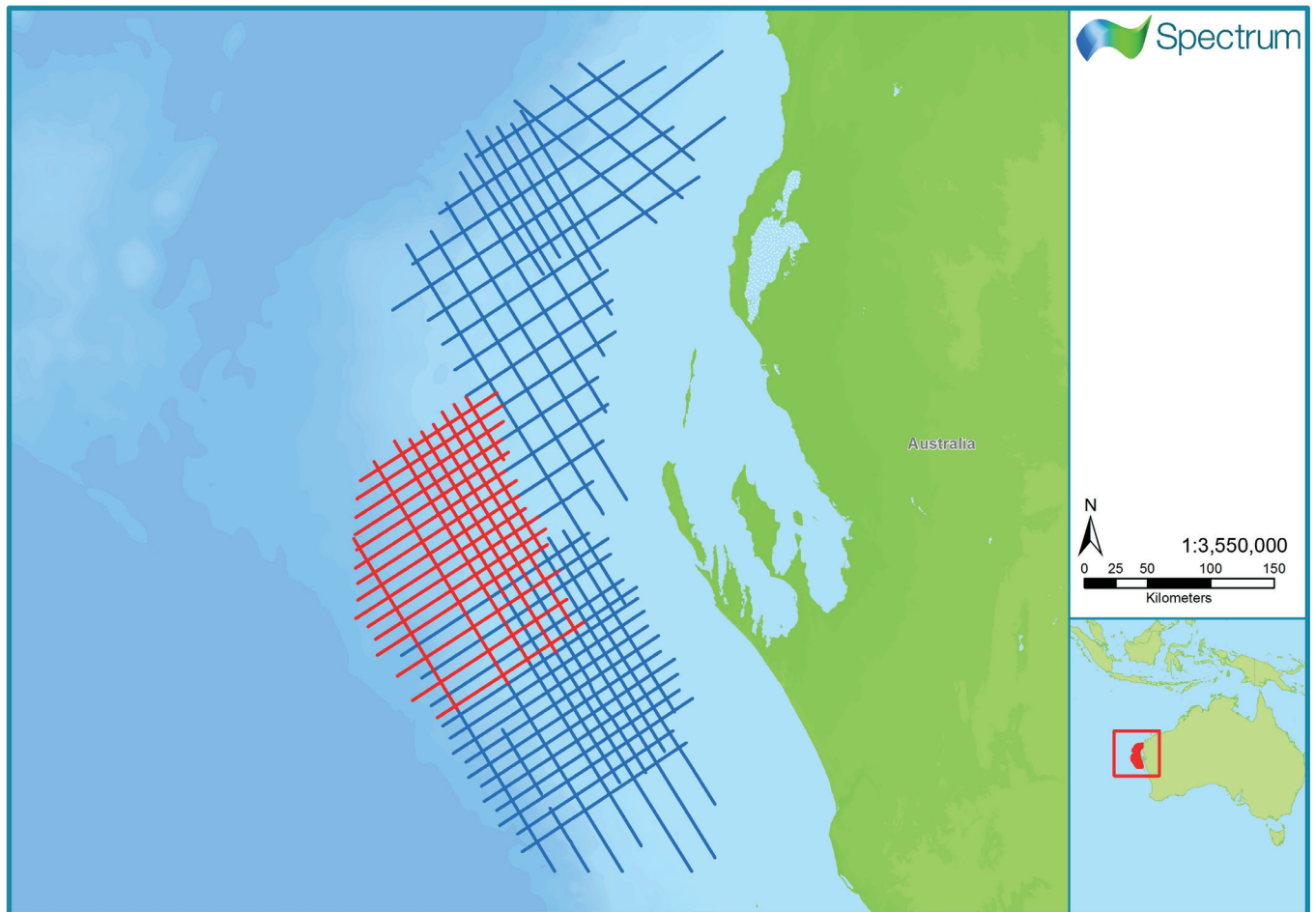


# Australia

Rocket MC2D 2015



Spectrum Multi-Client seismic coverage in RED

MULTI-CLIENT



Survey Name:	Rocket MC2D 2015	
Type:	2D Seismic	
Date:	Acquired: 2015 Processed: 2016	
Survey Size:	New acquisition: 8,292 km Reprocessed: 3,477 km	
Acquisition Parameters:	Vessel:	sr/v BGP Explorer, sr/v Gardline Duke
	Source volume:	2,000 in <sup>3</sup> Air Gun Array
	Source depth:	6 m
	Shot Point interval:	25 m
	Record length:	8 s
	Streamer length:	8,100 m
	Streamer depth:	15 m
	Group interval:	12.5 m
Processing Sequence:	Full details of the processing sequence are available on request	
Deliverables:	PSTM	
	PSDM	
	PSTM Gathers	
	PSTM Angle Stacks	
	Velocities	
	Navigation	
	AVO Products	

For more information please contact Spectrum's Multi-Client teams:

United States  
Spectrum Geo Inc.  
Tel: +1 281 647 0602  
Fax: +1 281 589 8111  
Email: mc-us@spectrumgeo.com

United Kingdom  
Spectrum Geo Ltd.  
Tel: +44 1483 730201  
Fax: +44 1483 762620  
Email: mc-uk@spectrumgeo.com

Singapore:  
Spectrum GeoPte Ltd.  
Tel: +65 6827 9773  
Fax: +66 6295 2567  
Email: mc-asia@spectrumgeo.com

Australia:  
Spectrum Geo Pty Ltd.  
Tel: +61 8 9322 3700  
Fax: +61 8 9322 1844  
Email: mc-au@spectrumgeo.com

MULTI-CLIENT

